

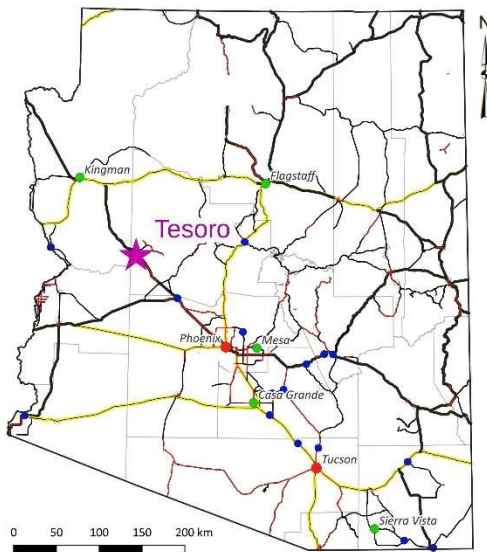


TESORO PROJECT

www.silverrangeresources.com

TSX-V:SNG

- Covers Lost Organ Grinder Mine and Big Ben Mine gold occurrences in Yavapai County, Arizona
- Historic surface rock samples to **52 g/t Au**
- Historic soil samples to **9.2 g/t Au**
- Historic trenching returned 33 m @ 1.85 g/t Au and best drill hole intercept was 3.0 m @ 2.54 g/t Au

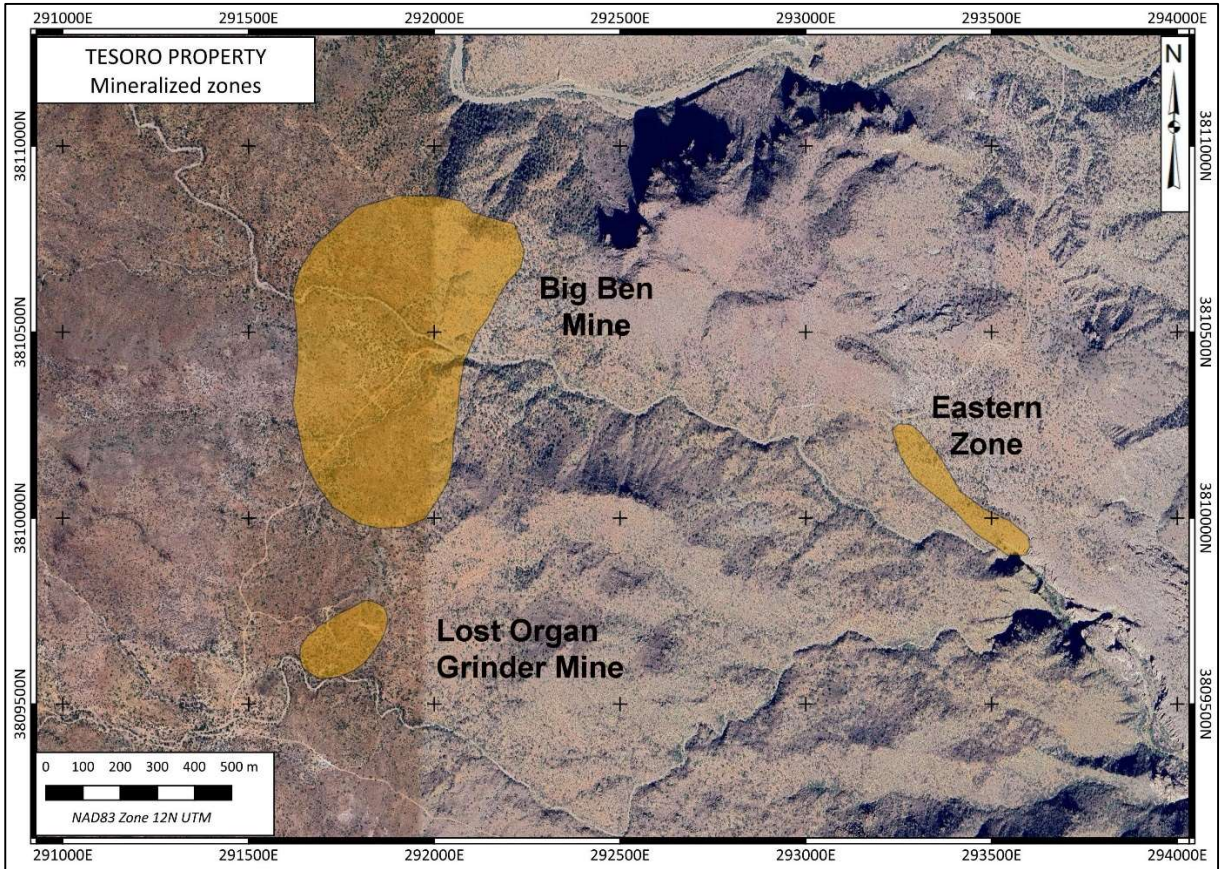
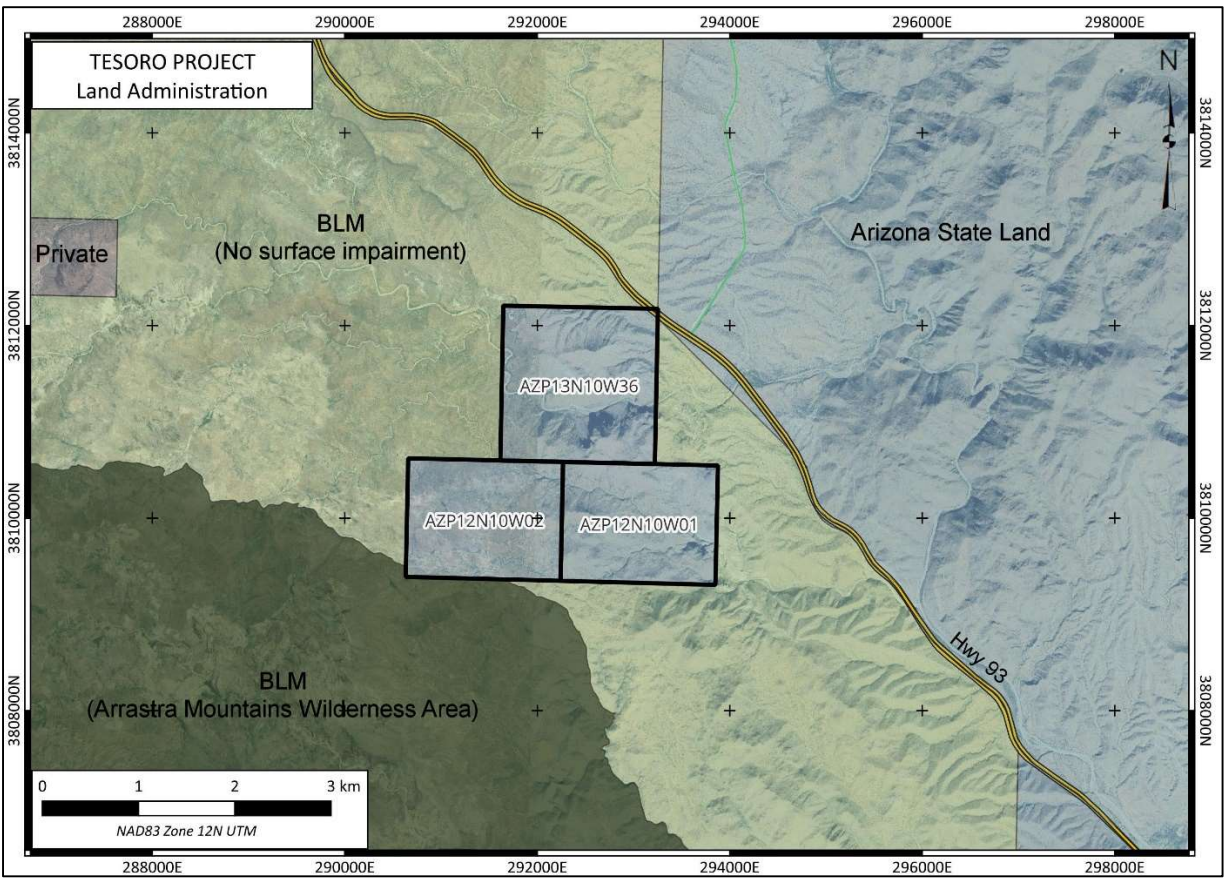


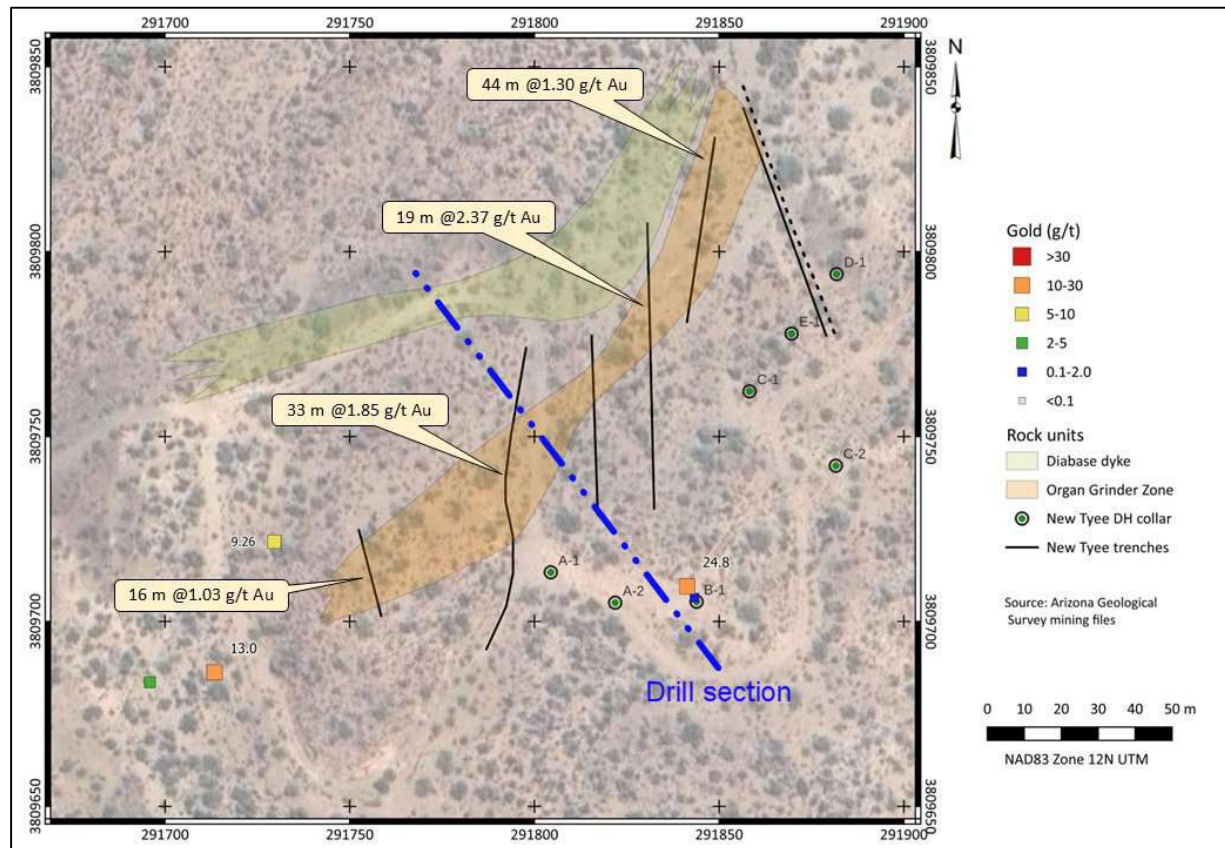
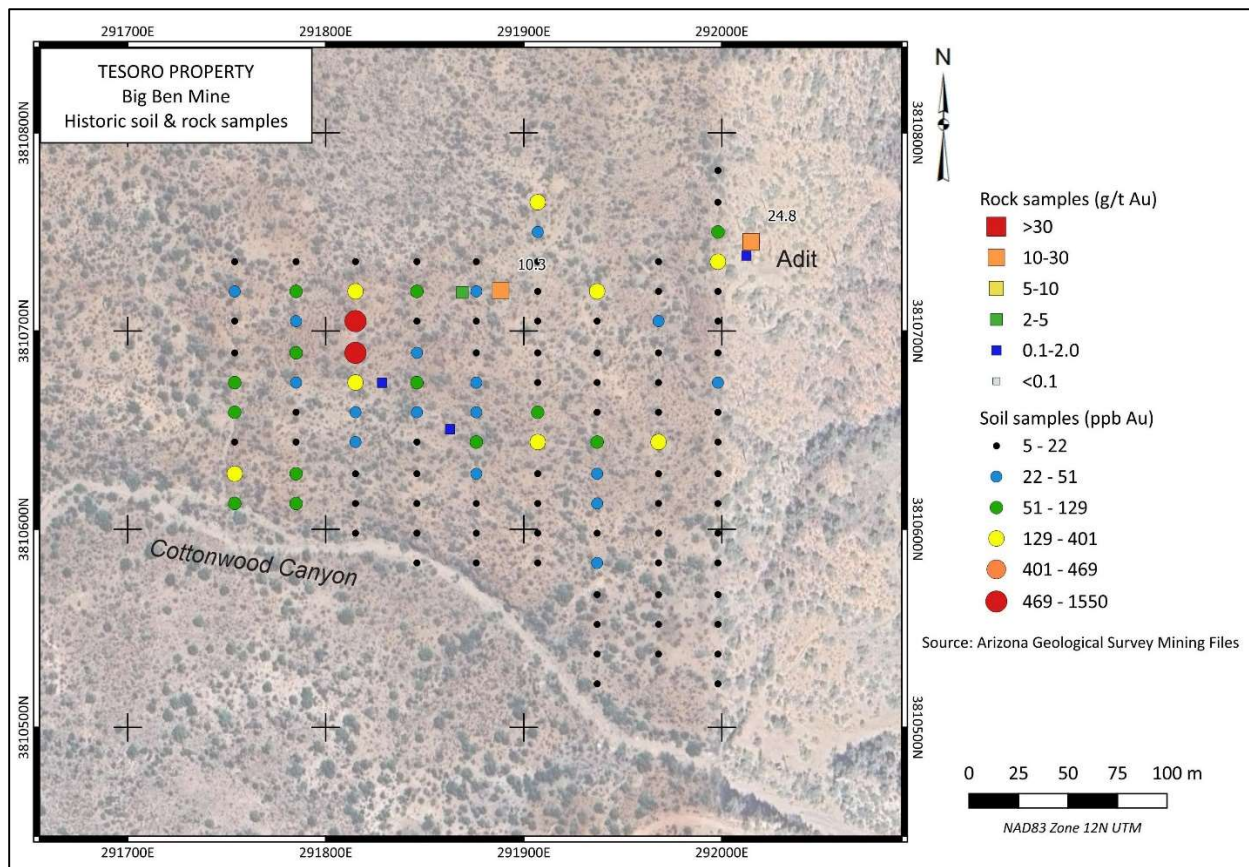
LOCATION & ACCESS

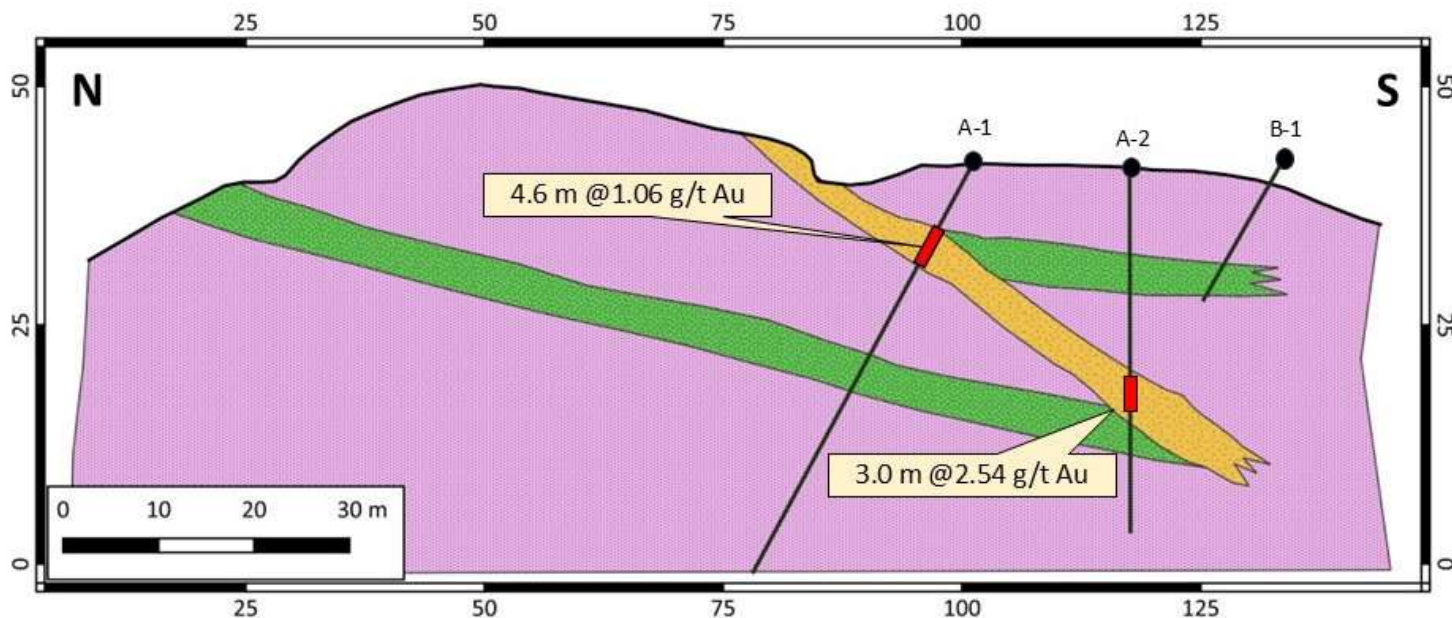
The Tesoro Project is centred at 34° 25' N 113° 15' W in Yavapai County, Arizona and covers all of Section 36, Township 13 N, Range 10 W and Sections 1 and 2, Township 12N Range 10W. The Property is 70 km northwest of Wickenburg. The principal showings on the property can be reached by road with a four-wheel drive high-clearance vehicle with access off Highway 93.

EXPLORATION HISTORY

The Tesoro Project covers the reported location of the Organ Grinder Mine and the Big Ben Mine. Both high grade gold showings were discovered by prospectors who were subsequently murdered by Apaches and their exact locations were not disclosed at the time of their demise. Recent exploration on the property was conducted in the 1980's by HiMac Resources Ltd., New Tyee Resources Ltd. and Gerber Minerals Corp. In 2006, the property was briefly explored by Sage Gold Inc. At the Big Ben Zone, best surface samples ran to 52 g/t Au and soil samples ran up to 9,200 ppb Au. Surface sampling at the Organ Grinder Mine returned up to 24.8 g/t Au. New Tyee cut 6 trenches on the property with best results of 33 m @ 1.85 g/t Au and 44 m @ 1.03 g/t Au. Their work defined a 160 m long zone, open on strike in one direction and down dip to the southeast. The zone dipped along surface slope, enhancing its apparent width. New Tyee drilled 7 reverse circulation holes into the zone with best results of 4.6 m @ 1.06 g/t Au and 3.0 m @ 2.54 g/t Au. Sage Gold Inc. briefly held permits on the Big Ben Property but there is no record of their work in the public record beyond a news release describing sample results. Silver Range applied for permits to explore the ground covering these historic showings in February 2025.







Drill section – Organ Grinder Mine

PROPERTY GEOLOGY & MINERALIZATION

The Tesoro Project area is underlain by Mid-Proterozoic granite and granodiorite with small roof pendants of metavolcanic and metasedimentary schist and cut by shallow-dipping diabase dikes. All known mineralization is hosted in the granitic rocks. These are cut by strong NW-NNW striking, steeply dipping structures but the two gold-bearing structures in the property area strike WNW and dip moderately to the north (Big Ben Mine) or strike NE and dip moderately to the SE (Organ Grinder Zone). Historic reports in the Arizona Geological Survey mining collection describe two styles of gold mineralization on the property. The first consists of narrow, widely spaced quartz veins carrying high grade gold values. The second, noted at the Organ Grinder Mine, consists of wider, gently dipping altered granite carrying gold in the 1-5 g/t Au range. The latter was of particular interest to recent exploration groups who saw the potential for the property to host low grade, bulk tonnage gold amenable to heap leaching. At the Big Ben Mine, surface rock samples collected by Sage Gold returned up to **52 g/t Au** while soil samples returned up to **9.2 g/t Au**. A soil grid installed at this showing by HiMac Resources Ltd. detected a strong gold-in-soil anomaly, open on strike, with sample responses up to 1,500 ppb Au.

PROPOSED EXPLORATION PROGRAM

Silver Range intends to conduct geologic mapping, soil geochemical & rock sampling followed by ground geophysics to define drill targets at the Tesoro Project.

THIS PROJECT IS AVAILABLE FOR OPTION, JOINT VENTURE OR SALE.