

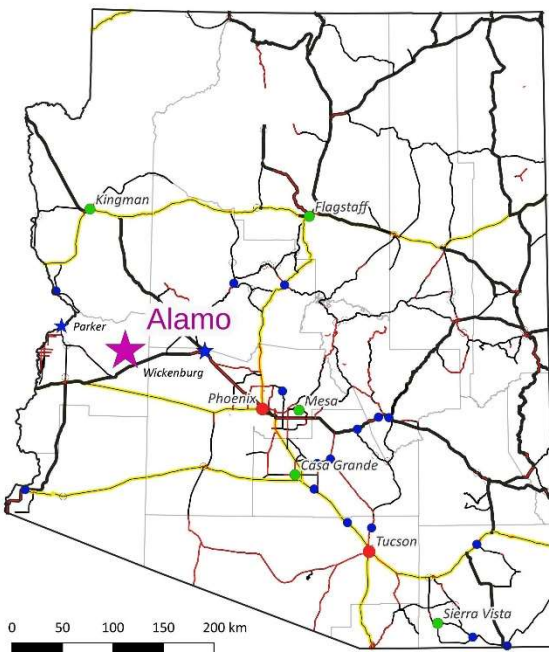


ALAMO

www.silverrangeresources.com

TSX-V:SNG

- Widespread high grade iron oxide copper gold (IOCG) mineralization
- Surface sample results up to **37.8 g/t Au** and **19% Cu**
- Past production of copper & gold at the Wenden Mine down to 1000 feet

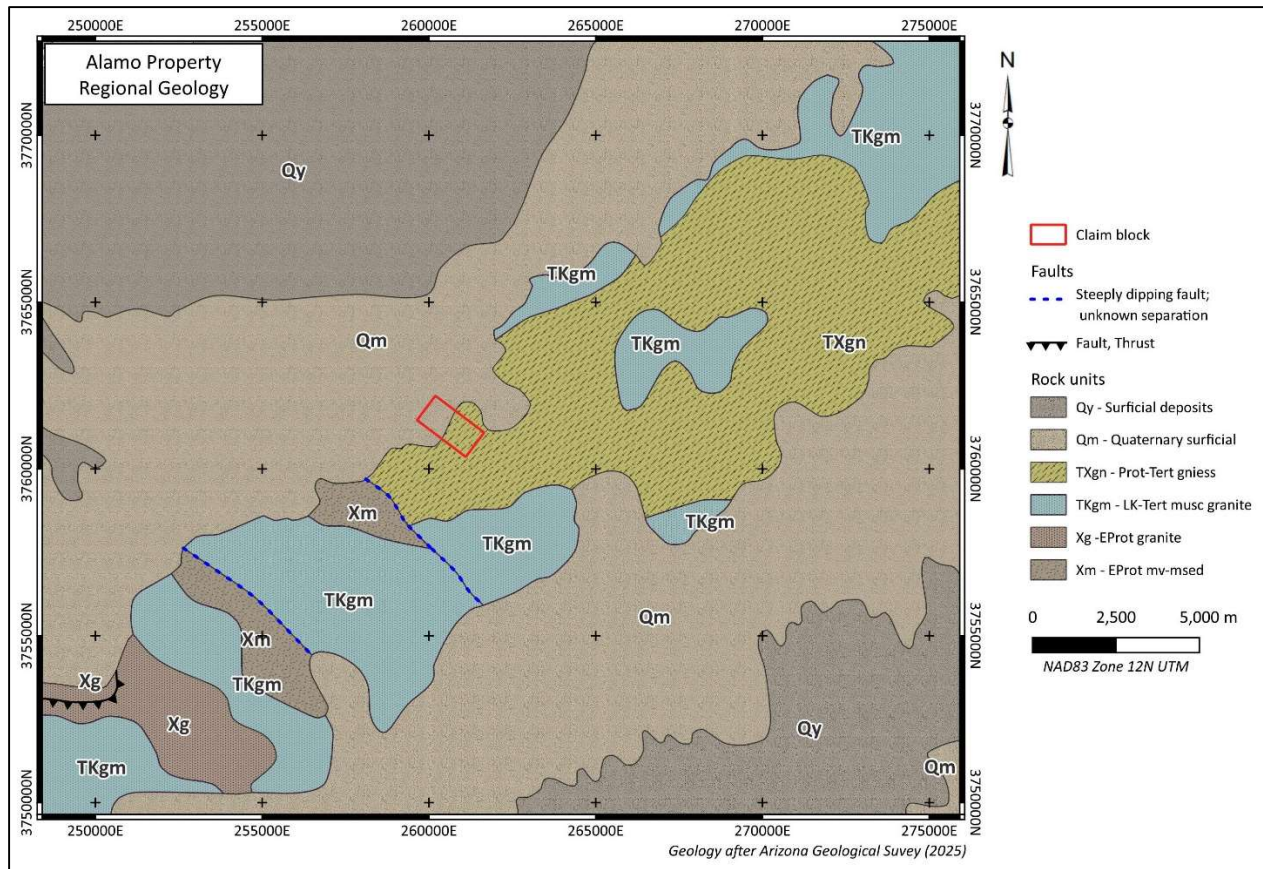
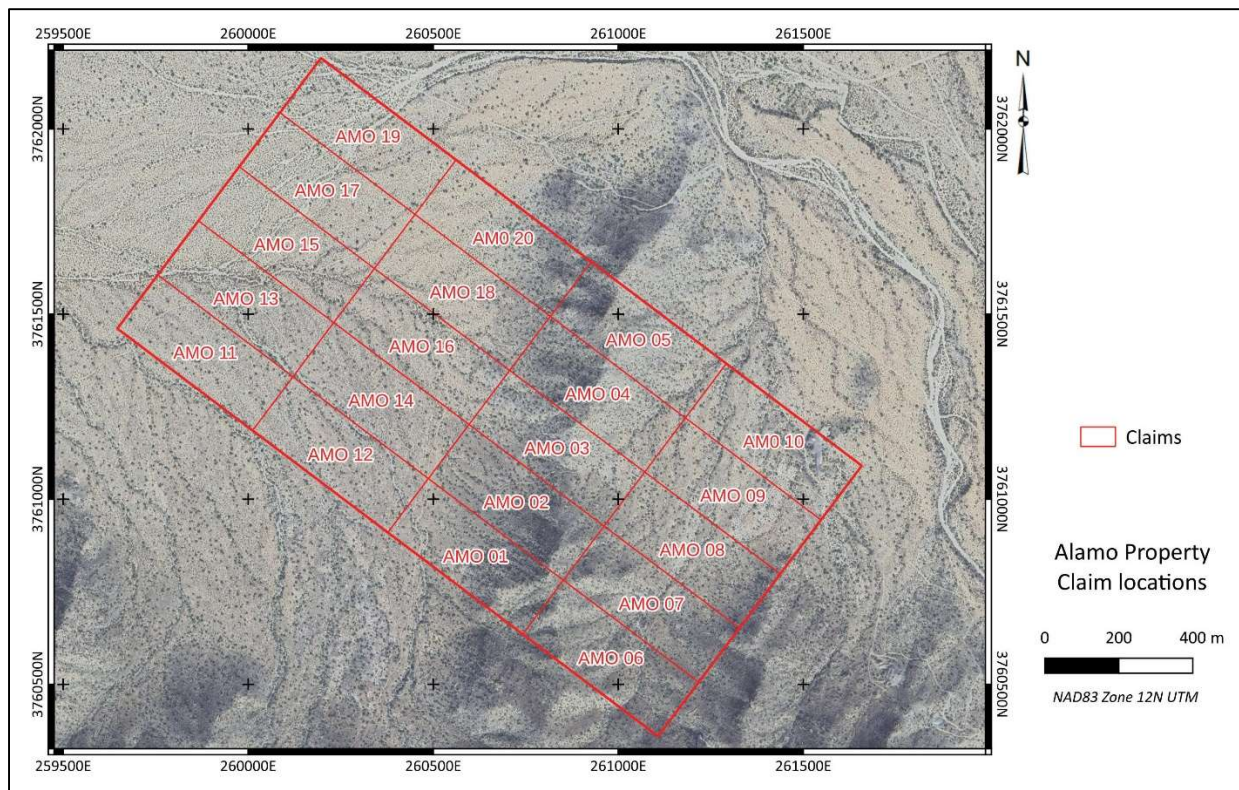


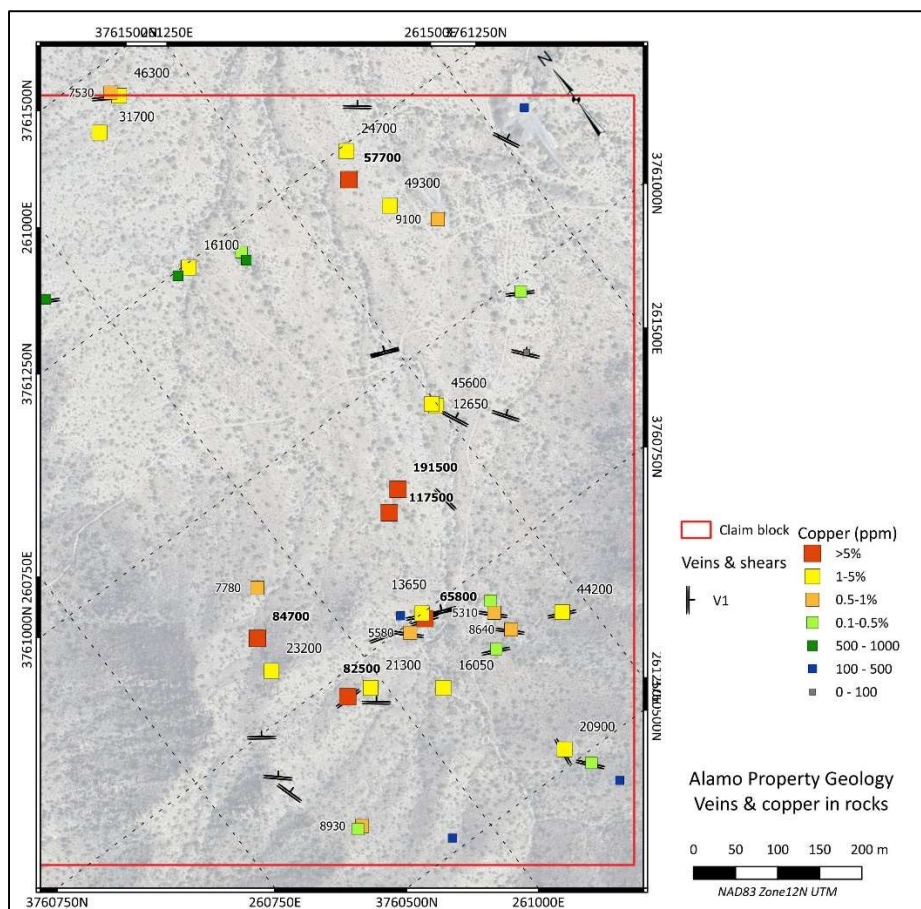
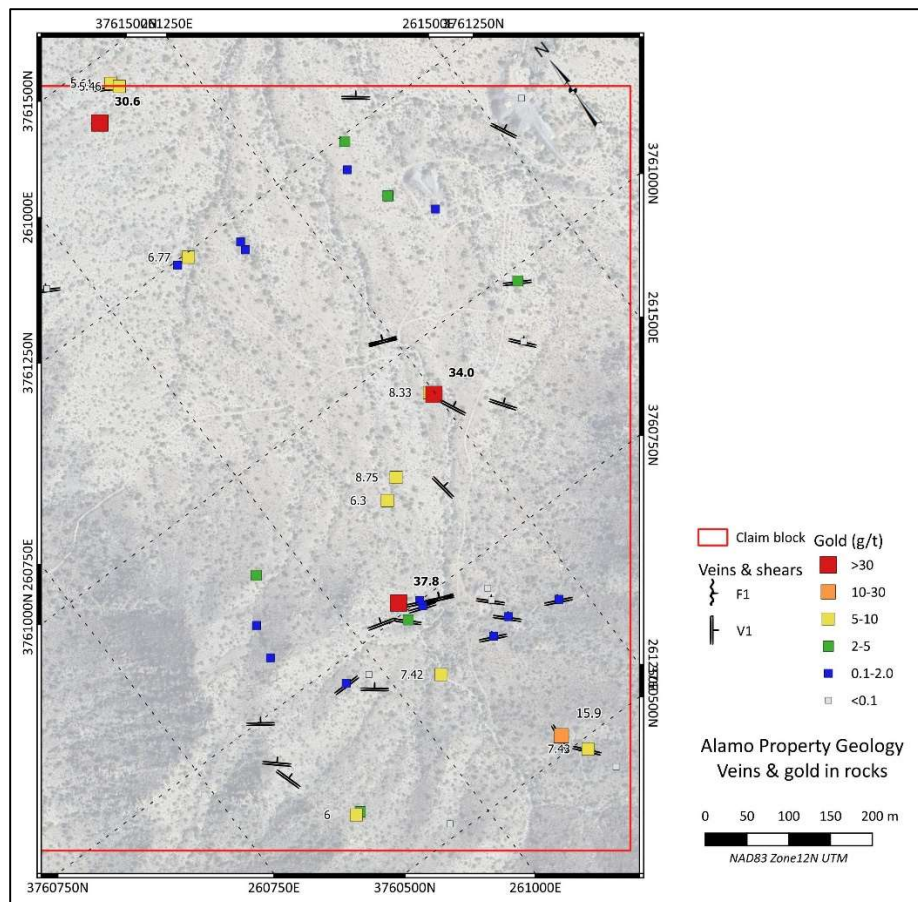
LOCATION & ACCESS

The Alamo Property is located in Section 11, Township 7N Range 13W, La Paz County, AZ, on the northwestern slope of the Harcuvar Mountains at Cunningham Pass. The property is 16 km north of Wenden and 68 km east of Parker. The property is accessible with a 4WD vehicle from the Alamo Road, a paved county road on the eastern side of the property. The property consists of 20 Federal Lode Claim on BLM land with no surface impairments.

EXPLORATION HISTORY

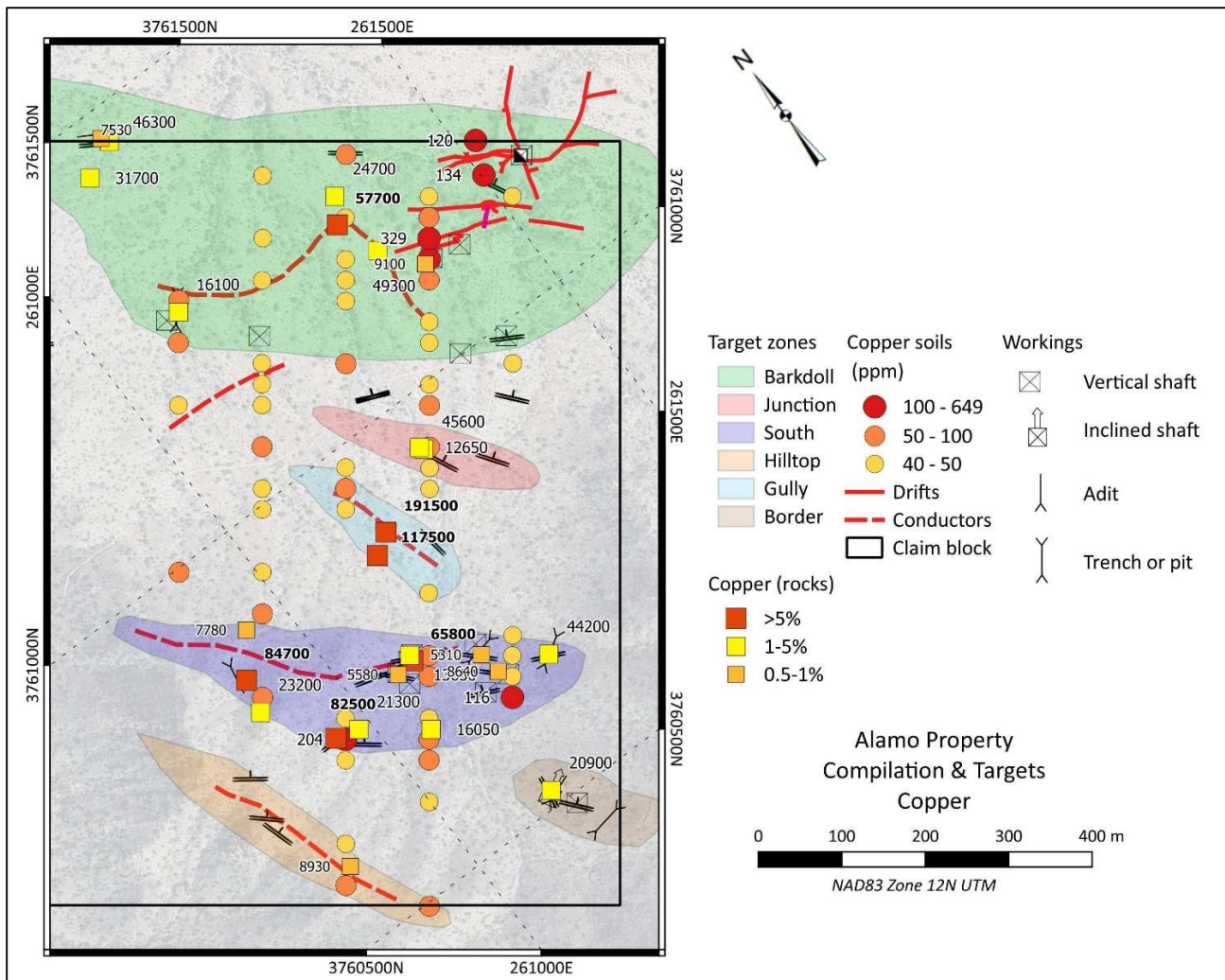
Mineralization at Cunningham Pass was discovered by James Cunningham in the 1880's. By the turn of the 20th century, about 25 miners were prospecting in the area for copper and gold. The Critic Mine was discovered shortly thereafter and produced between 1909 and 1916. In 1909, the deposit was described as consisting of two veins space 50 feet apart hosting high grade mineralization with lower grade intervening mineralization. A visiting USGS geologist reported in 1911 that the mine was shipping ore grading 12% Cu and ½ to 1 ounce per ton gold. The Critic Mine shut down in 1916 with leasers working the property into the 1930's. The Wenden Mine began production in 1916 with a 50 ton shipment averaging 9.77% Cu and \$17.50 / ton gold (29 g/t Au). The Wenden Mine produced until 1929, first from the "Old Shaft" down to 300 level and after 1925, from the nearby deeper Barkdoll Shaft. The latter was sunk to 1000 feet and a 1929 press release describes a 32-foot wide vein of which 20 feet were in "excellent working ore." A smelter return from a 50 ton 1929 shipment documents ore running 9.65% Cu and 0.5 OPT Au. There are no reports of work at the mine after 1929. Since the 1960's, the area has been staked by a number of individuals and private companies but there appears to have been no systematic exploration in the district.





PROPERTY GEOLOGY & MINERALIZATION

The Alamo Property is in the lower plate of a metamorphic core complex (MCC) underlying the Harcuvar Mountains. The property is underlain by Proterozoic gneiss intruded by Laramide granite. The rocks are cut by NW trending, NE dipping brittle structures, likely C' fractures developed during MCC formation. The resulting veins, shears and breccias host iron oxide copper gold (IOCG) mineralization consisting of earthy and specular hematite with lesser pyrite, chalcopyrite, chalcocite and galena together with iron and copper oxides. The host veins range in width from centimetres to more than 10 metres. Mineralization has been traced down to 300 m in the Wenden Mine. There are zones where veins coalesce, creating wide zones of lower grade mineralization. Soil geochemical survey results in gold and copper have delineated several target areas. Most of these are coincident with VLF-EM conductors. The target at Alamo is a wide zone of converging mineralized structures which subcrop, persist on strike and at depth.



PROPOSED EXPLORATION PROGRAM

Silver Range intends to conduct geochemical and geophysical surveys together with geological mapping and sampling to define trenching and drill targets.

THIS PROJECT IS AVAILABLE FOR OPTION, JOINT VENTURE OR SALE.

Mike Power President & CEO

mpower@silverrangeresources.com

702-972-7496