



SPARTA

www.silverrangeresources.com

TSX-V:SNG

- Sediment-hosted Archean mesothermal lode gold mineralization.
- Two advanced showings with small high grade resources: 30,000 T @ 0.31 OPT Au (GAB) and 3,000 T @ 0.36 OPT Au (Sparta Vein).
- Similar in style and setting to Atlantic Gold's Touqouy & Beaver Dam Deposits but potential for disseminated argillite hosted gold never recognized nor yet tested.
- 84 km NNE of Yellowknife, 16 km from Yellowknife – Contwoyto winter road at Gordon Lake.

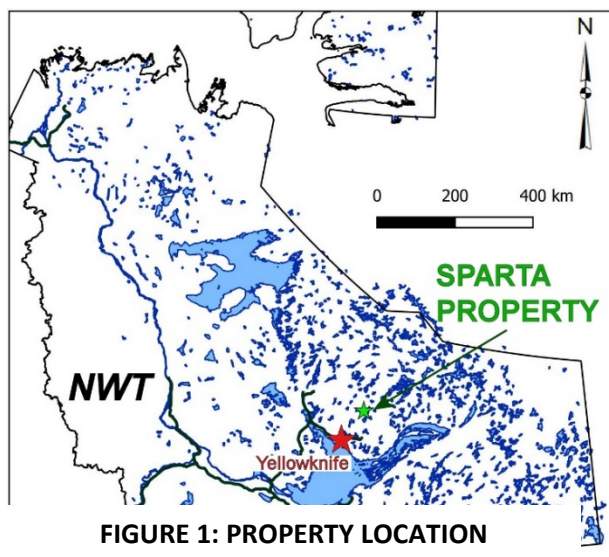


FIGURE 1: PROPERTY LOCATION

Figure 1. Location

LOCATION & ACCESS

The Sparta Property is centred at 63°05.94' N 113° 30.25' W on NTS 85P03 & 85P04 in the Northwest Territories, Canada. The property location is shown in Figure 1. The Property is 84 km from Yellowknife. The Property can be reached by helicopter, by fixed wing float or ski plane. The property is 16 km west of the Yellowknife – Contwoyto Lake Winter Road which is operated seasonally to service the diamond mines north of Yellowknife.

EXPLORATION HISTORY

The Sparta Property covers two advanced prospects which have seen extensive drilling. The Sparta Vein was staked by Spud Arseneault in 1945 and explored aggressively with 76 drill holes (9,994 feet) during 1946. Best intersection was **16.16m @ 9.94 g/t Au**. Treminco Resources Ltd.

conducted mapping and sampling near the Sparta Vein in 1988 and calculated an in-house resource of **3,000 tons at 0.36 OPT Au** to a depth of

62.5 feet using the historical data. The GAB Main Showing was staked by George Bleiler and drilled by Territorial Exploration and Drilling and Goldcrest Mines Ltd. in 1947. Drilling focused on a 600' section of the GAB Main Showing with best intersection of 2.59 OPT Au over 14 feet. In 1950, Garskie Gold Mines Ltd. drilled 13 holes (3360 feet) and excavated 5 trenches near the GAB Main Showing. Their drilling campaign focused on investigating down dip of the Main Showing beneath Cross Lake, drilling from islands. No assays were filed but the drill logs describe narrow, in some cases multiple, intersections of pyrite down-dip from the GAB Main Showing and intersections of pyrite, galena, sphalerite and visible gold in two holes (10 & 11) drilled west of the GAB Main Showing. The showing was drilled by Treminco in 1987 and they reportedly calculated a resource of **30,000 tons at 0.31 OPT Au**. They also located new mineralization. The Mac Lake No. 2 showing is defined by a single sample grading 0.230 oz/ton Au (**7.89 g/t Au**). At Mac Lake 3, 4 of 9 samples returned assays between 0.022 oz/ton and 0.256 oz/ton gold (0.75 to **8.78 g/t Au**). Silver Range re-staked the property in August 2016, conducting cursory sampling while staking.

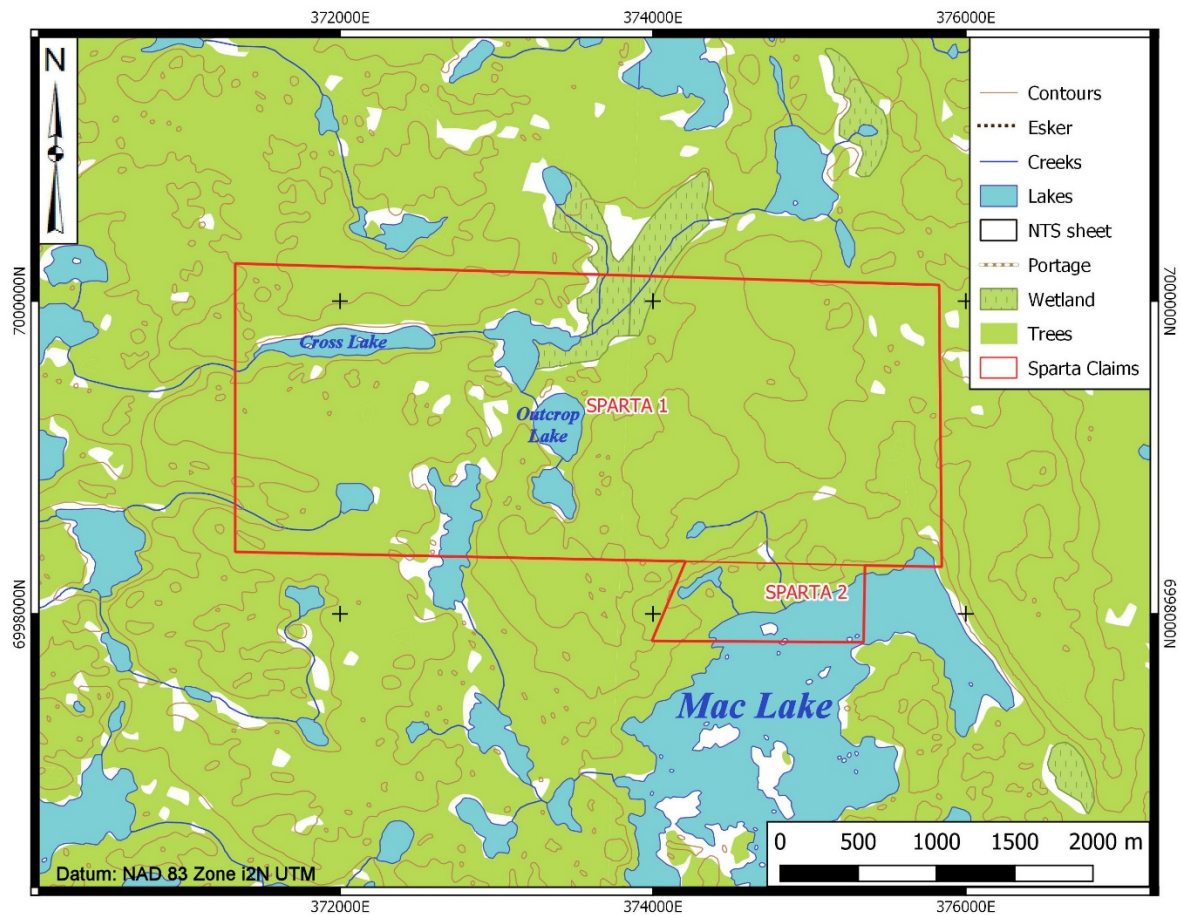


Figure 2. Claim locations

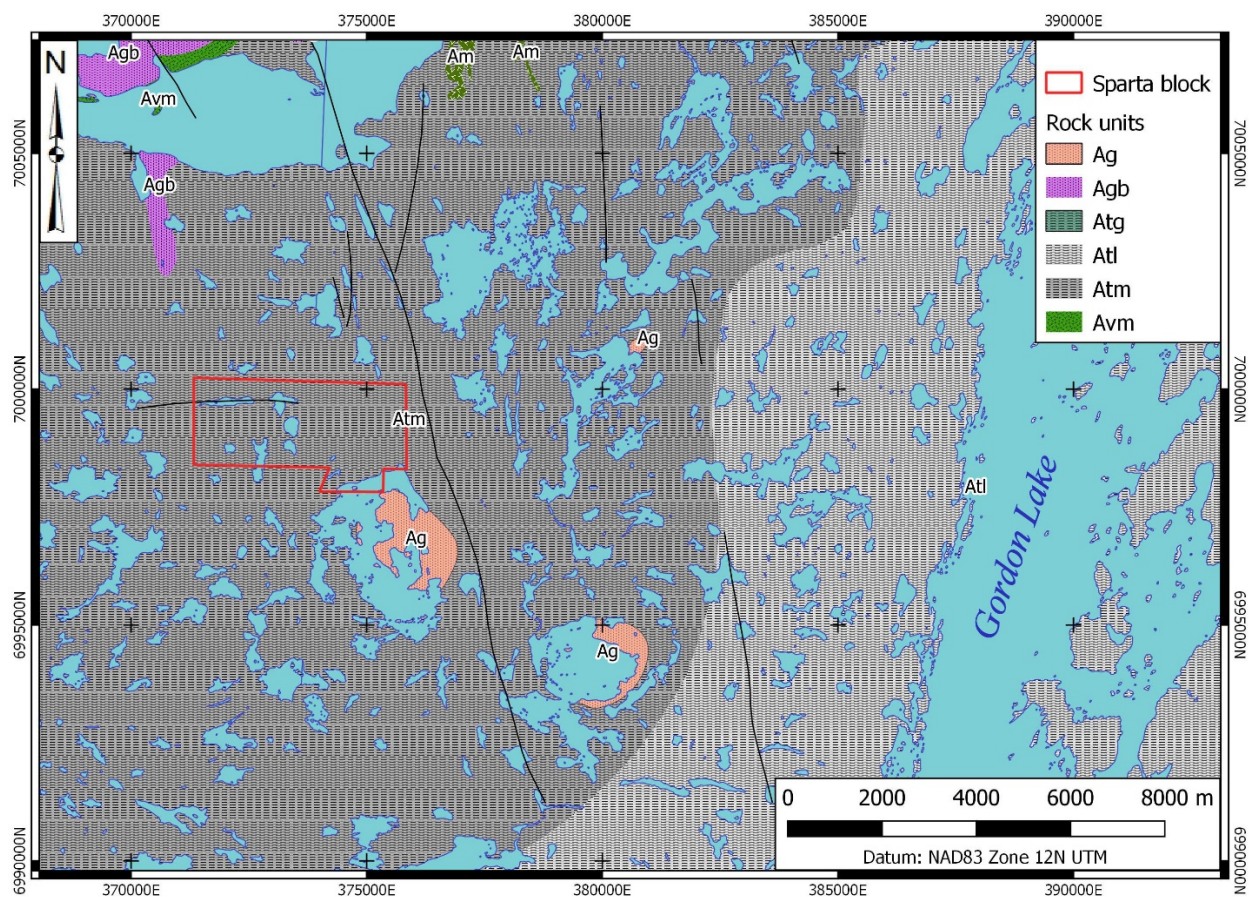


Figure 3. Regional geology

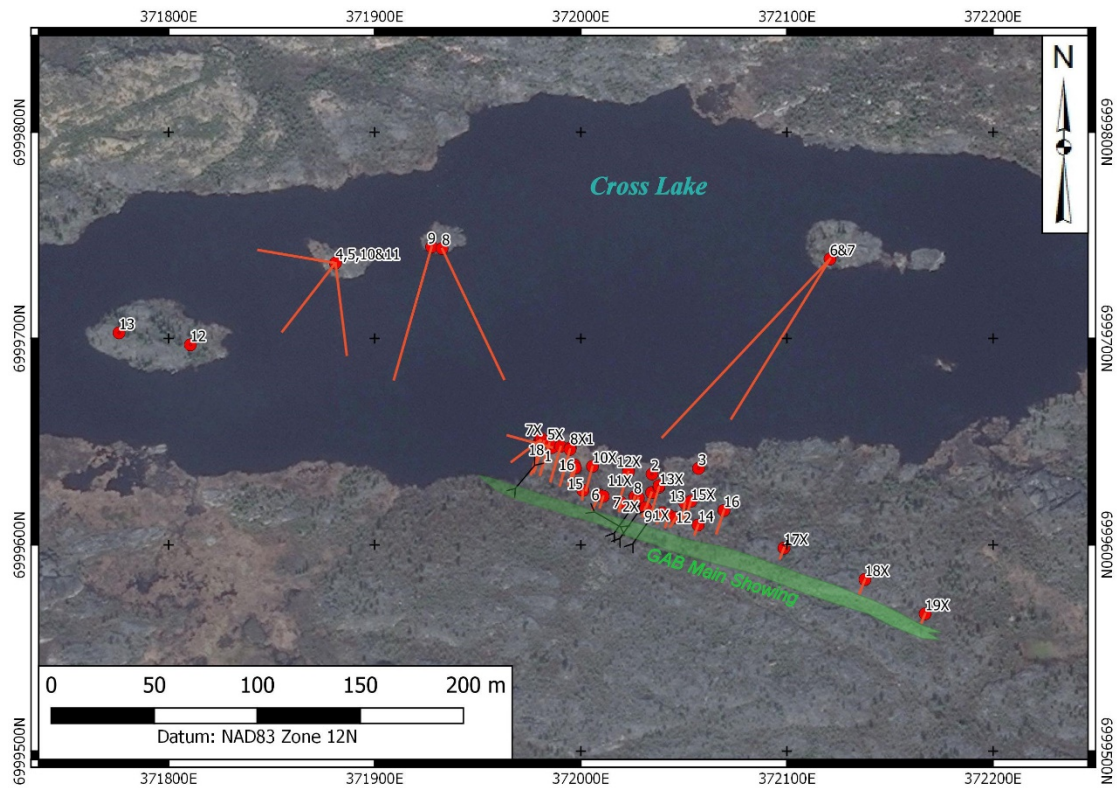


Figure 4. GAB Main Showing showing drill hole locations.

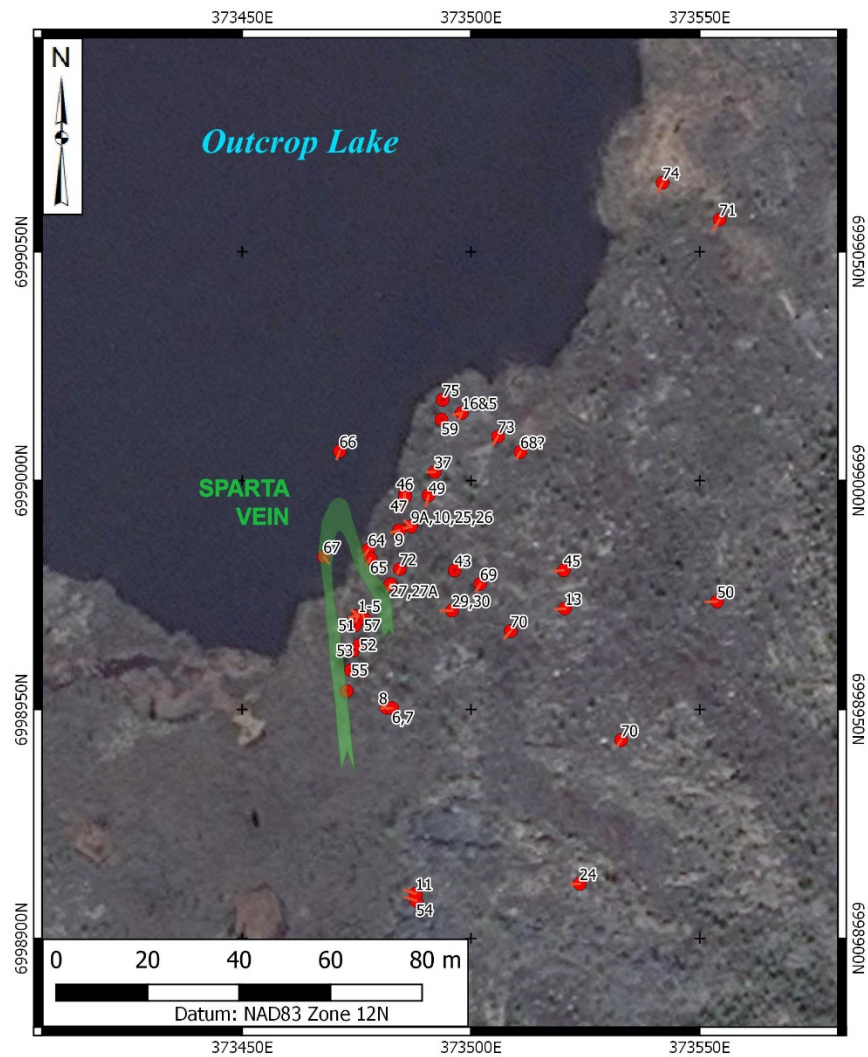


Figure 5. Sparta Vein showing drill hole locations

GEOLOGY & ECONOMIC MINERALIZATION

The Sparta Property is underlain by turbidites of the Archean Burwash Formation, metamorphosed to upper greenschist and amphibolite facies and intruded by granites of the Prosperous Suite. Rocks in the property area are isoclinal to tightly folded and moderate to steeply north dipping. Mesothermal lode gold style quartz-carbonate saddle-reef veins carry disseminated sulphides (pyrite, galena, sphalerite, chalcopyrite) along with high grade gold, occasionally reported as visible gold. At the GAB Main Showing, a quartz-carbonate vein in the centre of a shear zone has been traced intermittently along surface for 185 m east of Cross Lake and was apparently intersected in two drills beneath Cross Lake to the west. Numerous high-grade intersections were recorded in three rounds of drilling and the NORMIN reports that Treminco Resources calculated an in-house resource of **30,000 tons at 0.31 OPT Au** for the GAB Main Showing following their 1987 program. The vein remains open at depth and to the west. There is an untested parallel structure carrying sulphides, reported north of the shear hosting the GAB Main Showing. A possible unsampled extension of the GAB Main Showing in outcrop is reported on the northwest shore of the lake.

The Sparta Vein is a classic saddle reef quartz vein developed in the axial zone of a NW striking and plunging anticline. The vein is tightly folded, recumbent to the SW with both limbs dipping at about 30° to the NE. The west limb of the fold contains thicker, higher tenor mineralization and persists further to the south of Outcrop Lake than the east limb. The width and tenor of mineralization increases in both limbs approaching the fold nose. This lies beneath Outcrop Lake and has not been tested by drilling. Approximately 150 m north of the Sparta Vein, additional gold-bearing quartz vein mineralization outcrops at a higher stratigraphic level in what would appear to be the east limb of the fold. A historic grab sample of this material here at the Tinker 4 Showing returned **21.81 g/t Au**. Treminco Resources identified 3,000 tons at 0.36 OPT Au to a depth of 62.5 feet at the Sparta Vein while assessing the possibilities of high grading the structure. This resource calculation appears to have been limited to the shallow material on land south of Outcrop Lake.

Treminco Resources postulated a favourable, mafic horizon within the Burwash Formation localizing gold-bearing quartz vein mineralization from west of Cross Lake, southeast to Mac Lake. At Mac Lake, additional high-grade gold occurs at two showings and there are records of 8 blast trenches (with no reported assays) along this trend between Cross Lake and Outcrop Lake. This trend was never subsequently investigated.

All exploration work to date at Sparta has focused on drill testing and sampling the quartz veins with no attention paid to the wall rock. Mineralization at the Sparta Property is similar in style, tenor, stratigraphic setting, metamorphic grade and structural setting to that found at Atlantic Gold's Touquoy and Beaver Dam deposits in Nova Scotia where the bulk of the relatively high grade disseminated gold resource is found in wall rock adjacent to the saddle reef veins. At both deposits, the bulk of the contained gold is in the argillite adjacent to the saddle reef veins. This newly recognized style of gold mineralization adjacent to the higher-grade saddle reef veins is an intriguing, untested target which might host much larger gold endowment than the known quartz veins at Sparta.

PROPOSED EXPLORATION PROGRAM

Silver Range intends to conduct detailed sampling of both the exposed mineralization and adjacent wall rock at Sparta together with geological mapping, relocation of historic drill holes and prospecting along the inferred trend of mineralization between Cross Lake and Mac Lake.

THIS PROPERTY IS AVAILABLE FOR OPTION OR JOINT VENTURE.