



The High Grade Precious Metals Prospect Generator



**Property Portfolio
September 2025**

Certain information regarding the Company contained herein may constitute forward-looking statements within the meaning of applicable securities laws. Forward-looking statements may include estimates, plans, expectations, opinions, forecasts, projections, guidance or other statements that are not statements of fact. Although the Company believes that the expectations reflected in such forward-looking statements are reasonable, it can give no assurance that such expectations will prove to have been correct. The Company cautions that actual performance will be affected by a number of factors, many of which are beyond the Company's control, and that future events and results may vary substantially from what the Company currently foresees. Discussion of the various factors that may affect future results is contained in the Company's Annual Report which is available at www.sedar.com. The Company's forward-looking statements are expressly qualified in their entirety by this cautionary statement.

The Keg Deposit NI 43-101 disclaimer

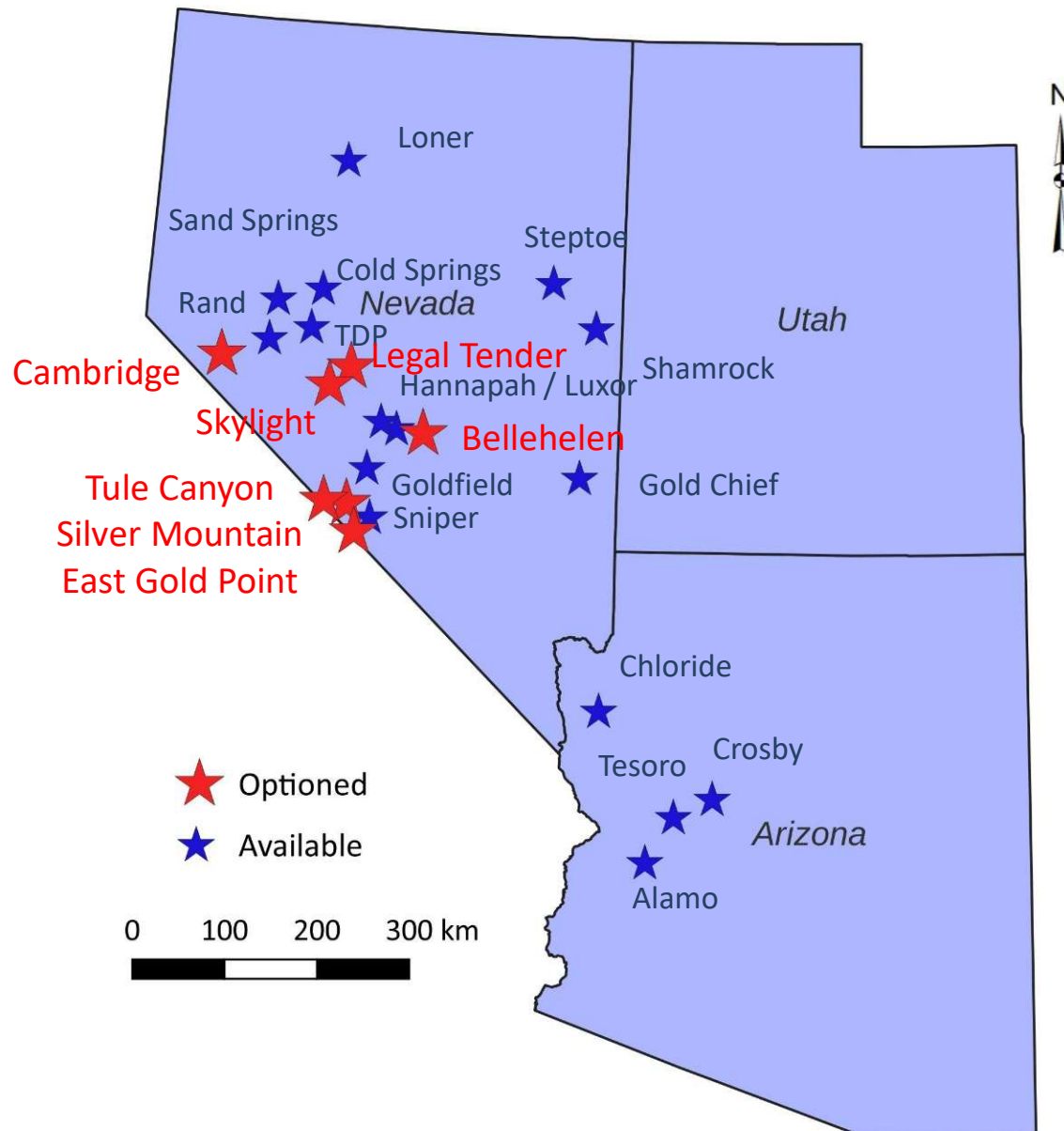
At a 16 g/t silver cut-off, the Keg inferred resource is 39.76 million tonnes grading 30.25 g/t silver, 0.26% lead, 0.77% zinc and 0.15% copper. For further details see technical report entitled "Geology, Mineralization, Geochemical Surveys, Diamond Drilling, Metallurgical Testing and Mineral Resources at the Keg Property" dated December 19, 2012 and amended May 27, 2013 and filed on SEDAR.

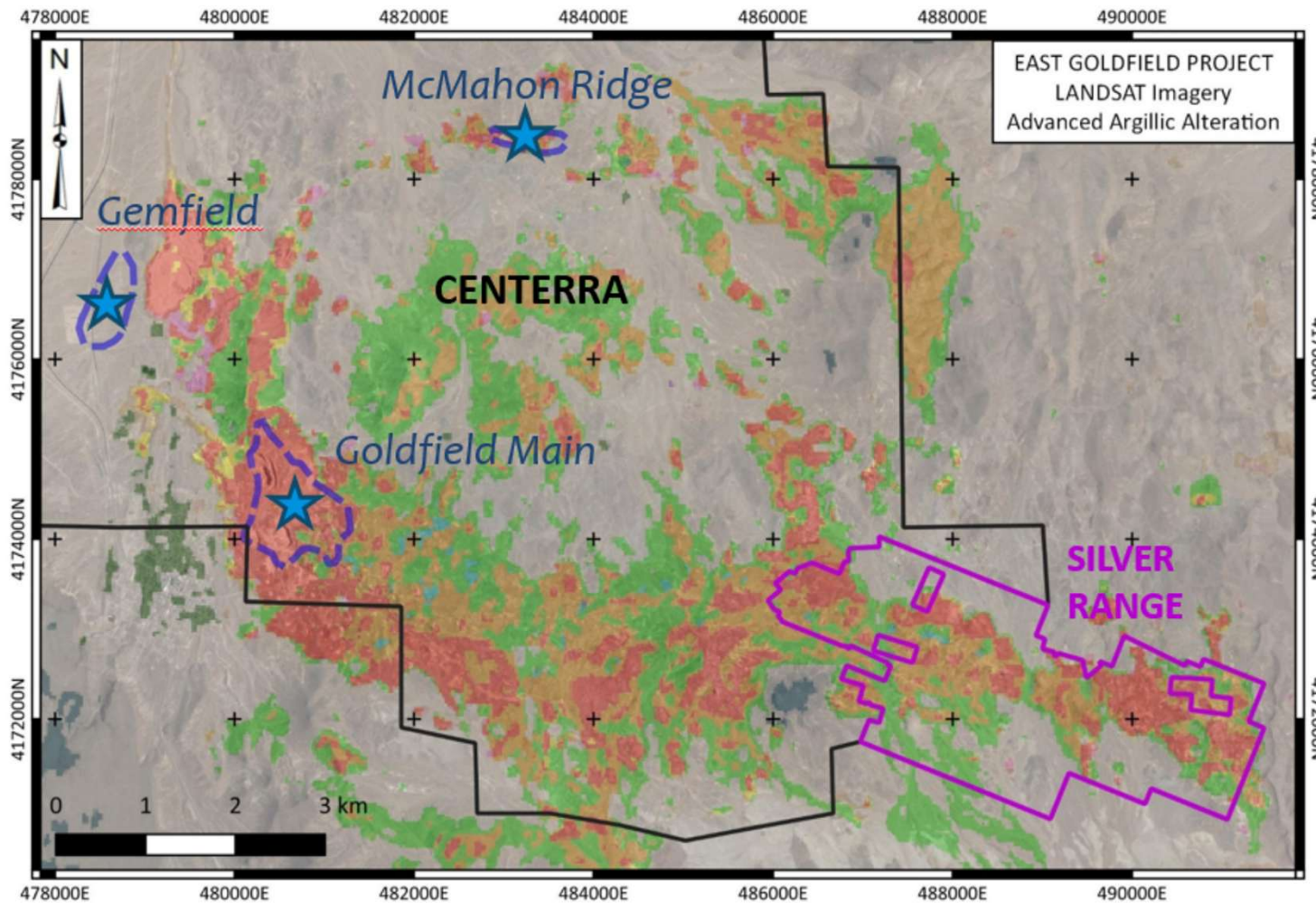
The Mel Main Zone Deposit NI 43-101 disclaimer

The Mel Main Zone hosts an inferred resource of 5.38 million tonnes grading 6.45% zinc, 1.85% lead and 44.79% barite (BaSO_4), at a cut-off grade of 5.0% zinc-equivalent. Zinc-equivalence was calculated using metal prices of US\$0.89/lb zinc and US\$0.96/lb lead and assuming 90.3% zinc recovery and 97.7% lead recovery. Further details of the estimation procedure are available in a NI 43-101 report authored by Giroux Consultants Ltd. and H. Leo King. P. Geo., dated November 12, 2014 and filed on SEDAR.

All technical information contained in this presentation pertaining to projects located in Yukon has been approved by Matthew R. Dumala, P.Eng., a geological consultant to Silver Range Resources and qualified person for the purposes of NI 43-101.

All technical information contained in this presentation pertaining to projects located in NWT, Nunavut, Nevada and Arizona has been approved by Michael Power, CPG., President and C.E.O of Silver Range Resources and qualified person for the purposes of NI 43-101.

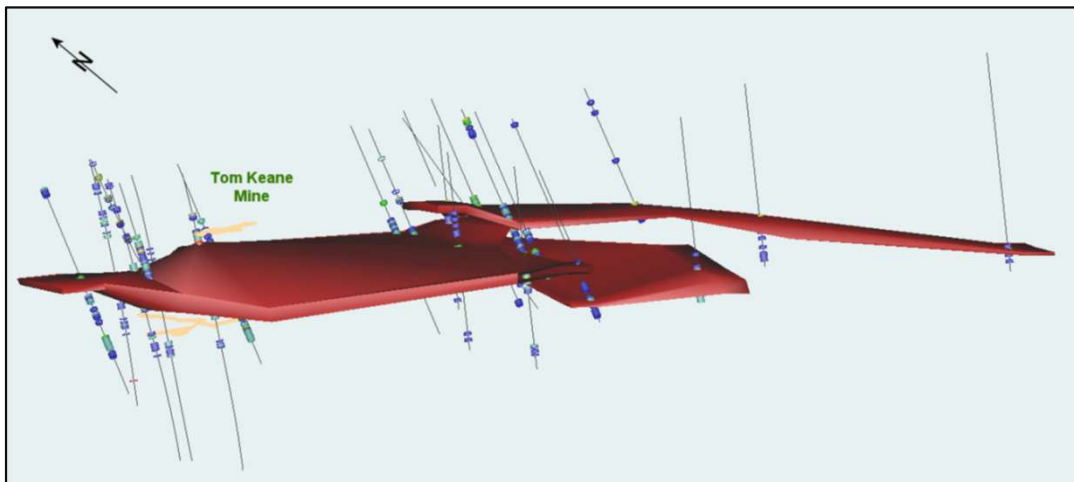




- Goldfield District:
Centerra
developing 3
deposits
- 4.5Moz Au
produced
- Eastern extension
of the district
- Tom Keane Mine &
scores of other
workings

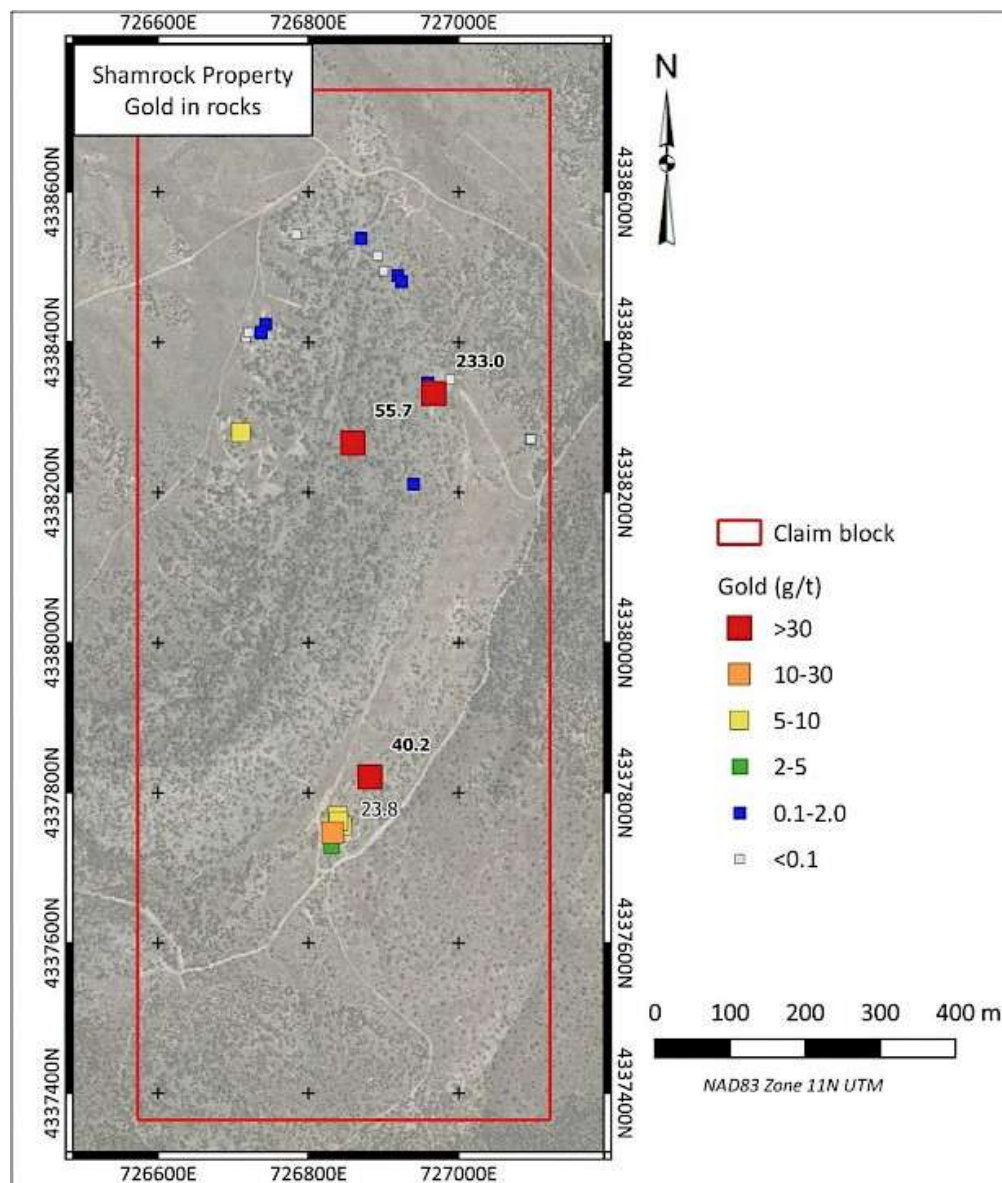


Tom Keane Mine

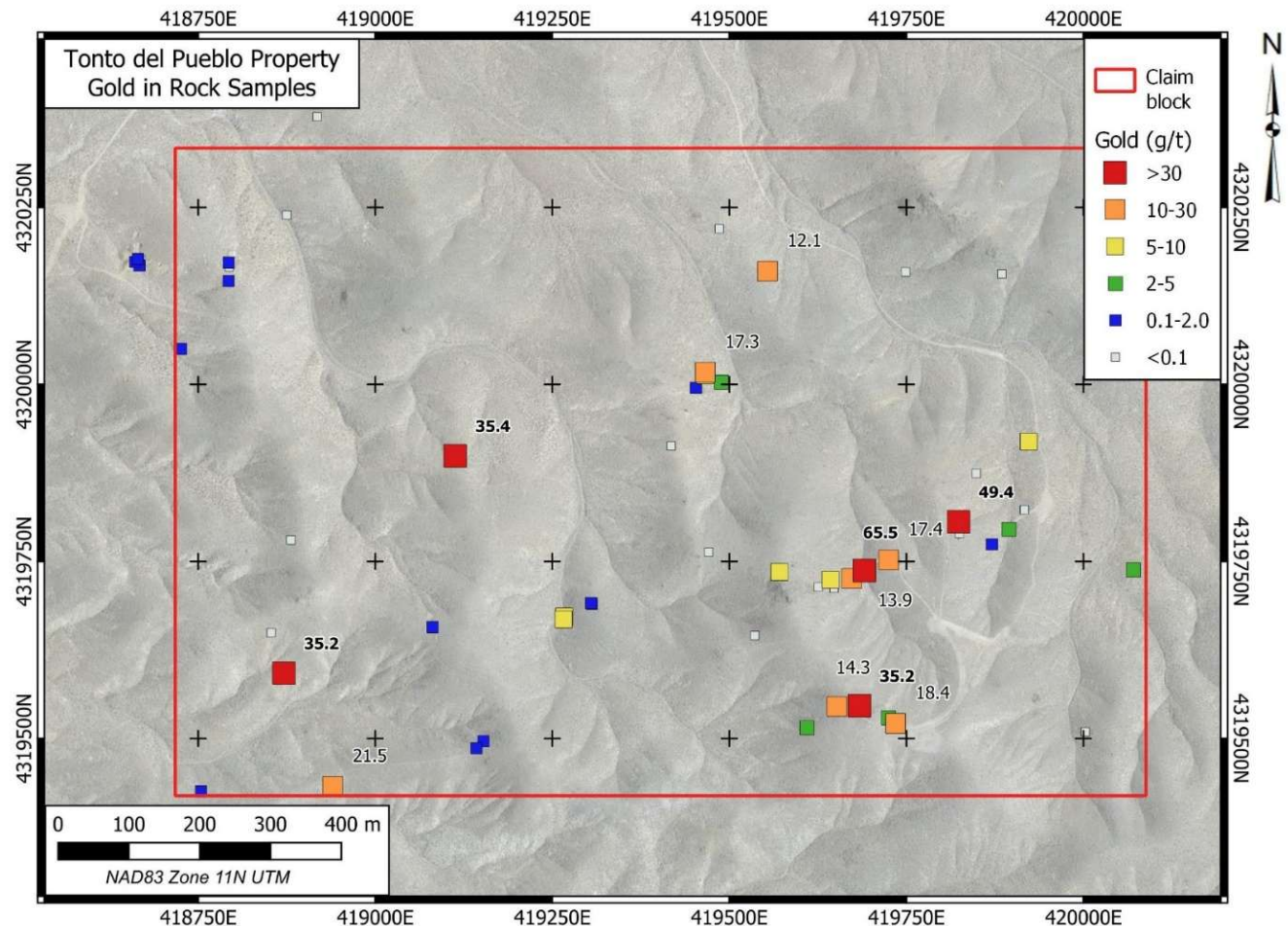


- Large drill data base
- Clear drill target at Tom Keane Mine defined by 26 drill holes:
 - 2.2 to 6.6 Mt
 - 0.34 to 0.62 g/t Au
 - 55 to 73 K oz Au

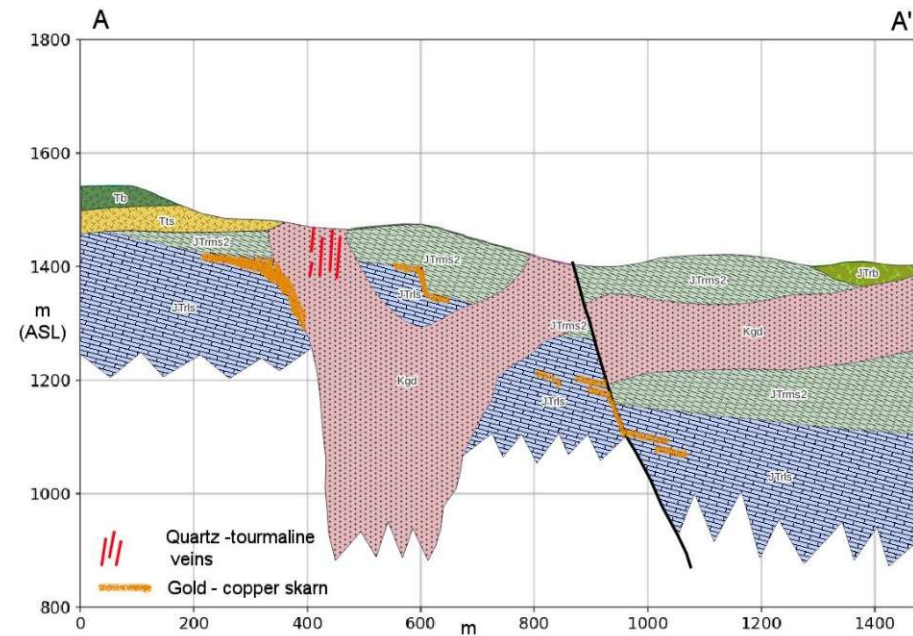
- Carbonate replacement deposit (CRD) target
- 50 km east of Ely, NV
- Intermittent past production: 1876-1948
- Recent sampling: **233 g/t Au**, **1,520 g/t Ag** and **4.03% Cu**



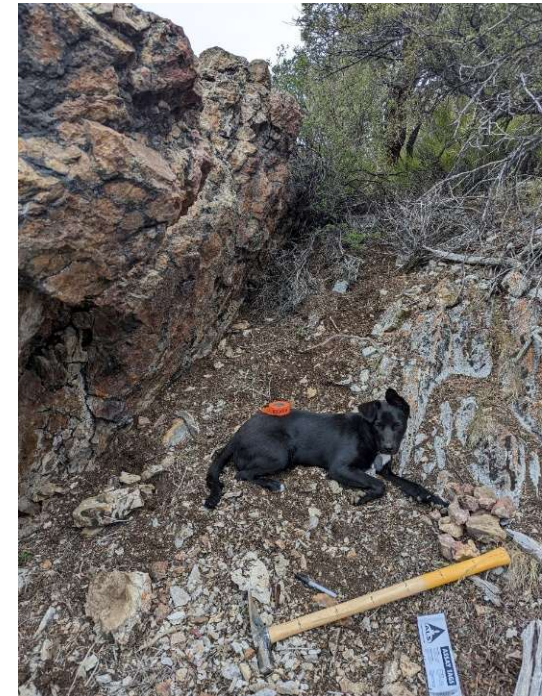
- Low-sulphidation gold mineralization
- 17 km north of Gabbs, NV
- Grab samples to **65.5 g/t Au** /18 of 54 > 5 g/t Au
- VLF-EM and soil sampling conducted.
- Underexplored epithermal-porphyry district with scale potential



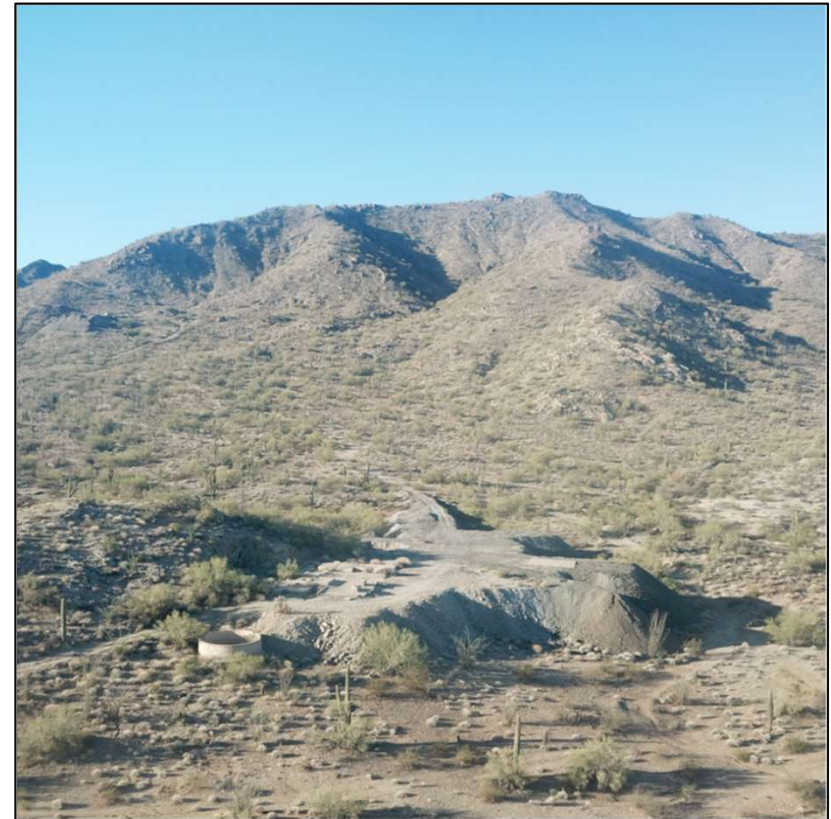
- 42 km east of Fallon, NV
- Gold-copper skarn & intrusive related veining
- Surface samples to **10.1 g/t Au & 3.5% Cu**
- Drill results (separate holes) 3.05 m @ 4.8 g/t Au, 9.05 m @ 0.77% Cu
- Recent mapping & airborne magnetic surveys



- 40 km north of Ely, NV
- Structurally controlled gold & jasperoid
- Numerous surface & underground workings
- Samples to **248 g/t Au** & **1.5 m @ 20.6 g/t Au**.
- Extensive district-scale stream & soil geochemical database
- Unexplored Carlin-style Au target analogous to Long Canyon, Cherry Creek deposits



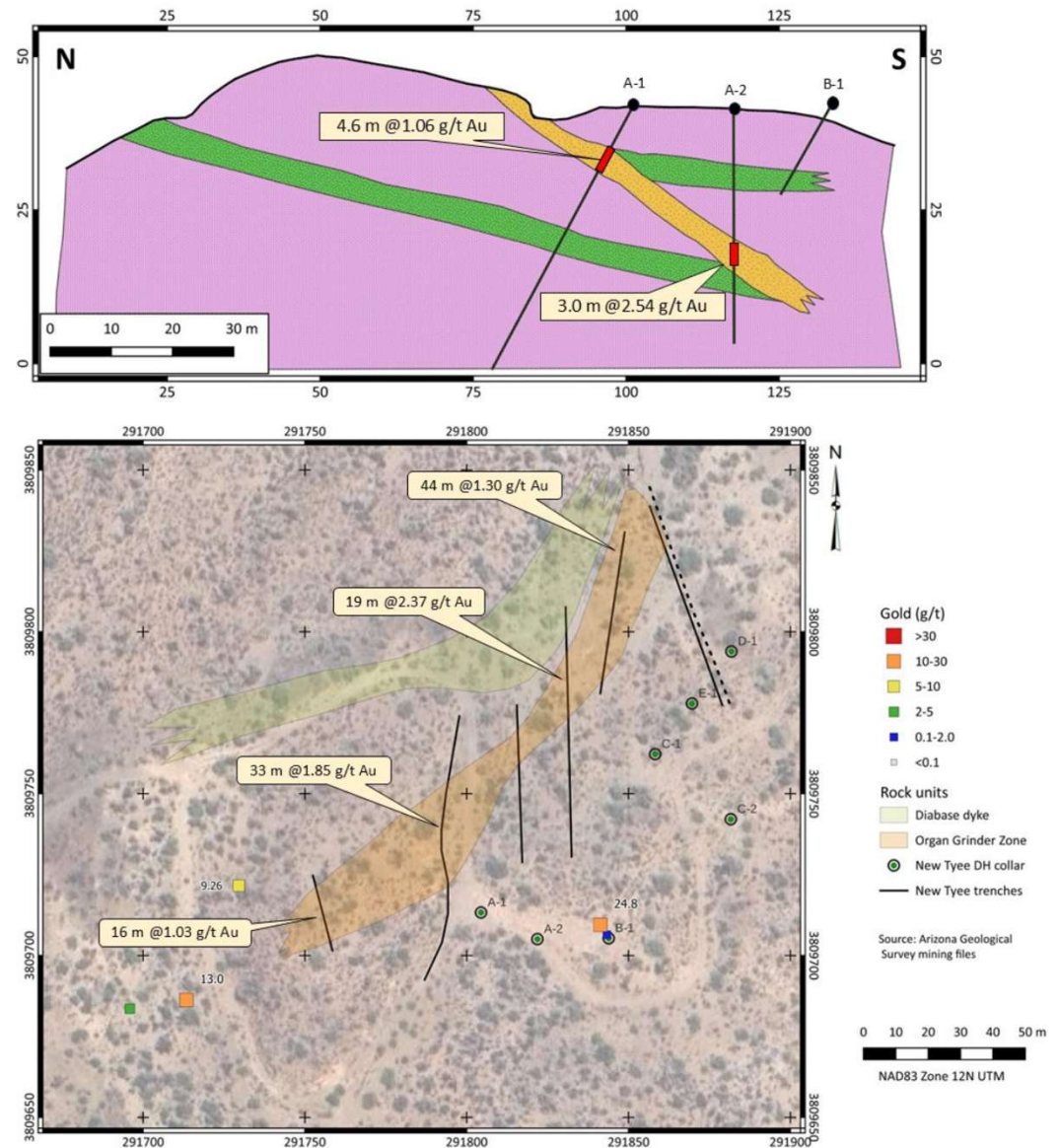
- 20 Federal Lode claims – La Paz County, AZ
- Wenden Mine
 - Development down to 1000' level
 - Shipped district ore “18-20% copper and \$10 gold per ton” (~ 0.5 OPT Au)
- Structurally controlled Au-Cu with hematite, chalcopyrite, Cu-oxides,
- Recent sampling to **15.79 g/t Au** and **6.6% Cu**.

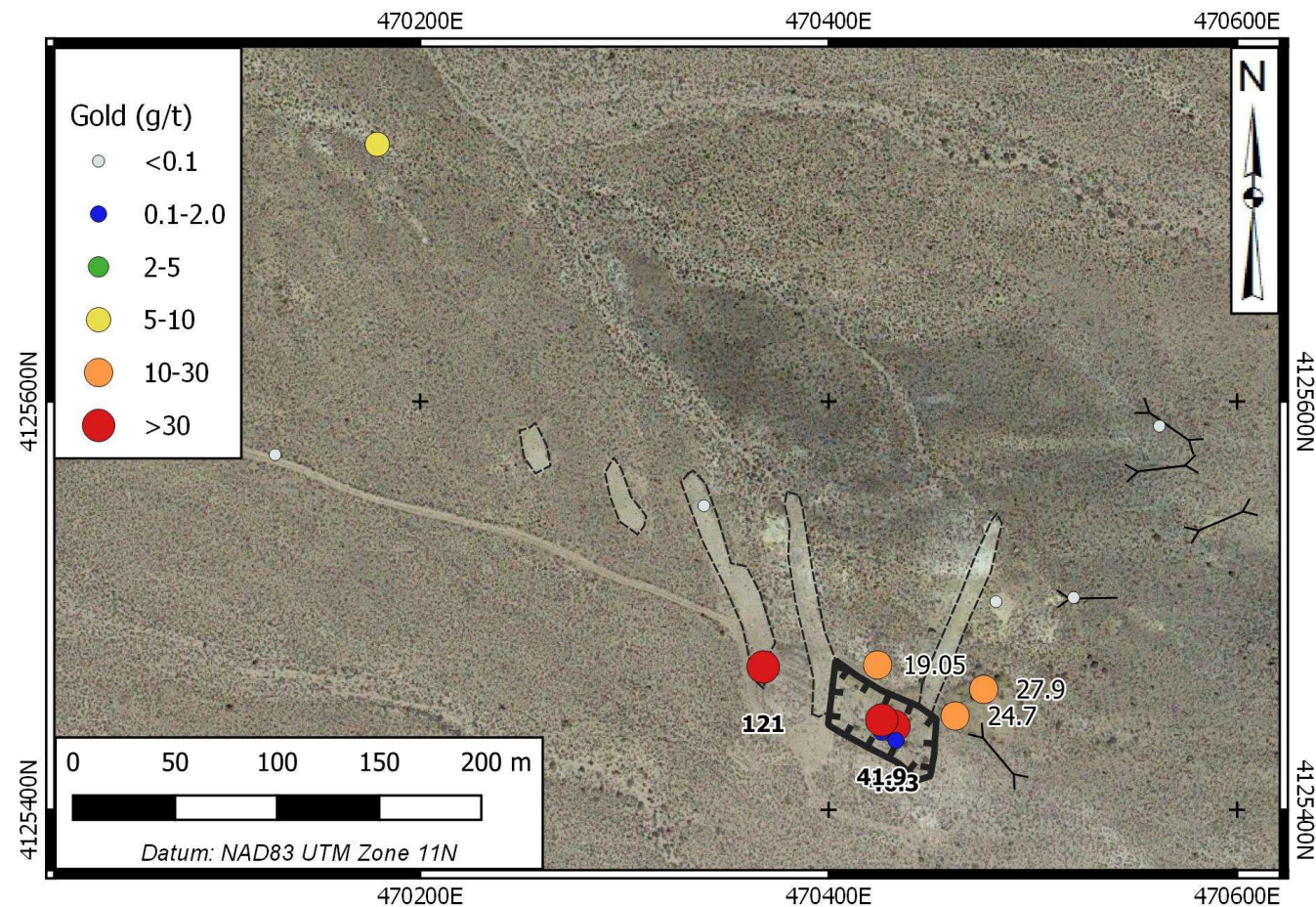




- Carbonate-hosted gold in normal and detachment faults
- Past production – 5200 t @ **6.18 g/t Au** (run of mine)
- Recent sampling:
 - 14 m @ 1.93 g/t Au
 - **4.58 g/t Au** (1 m chip)
- 3D IP survey defines two targets:
 - Structural control on down-dip extension of mine mineralization
 - Larger chargeability anomaly at depth
- Size potential: Open structural fairway to the east

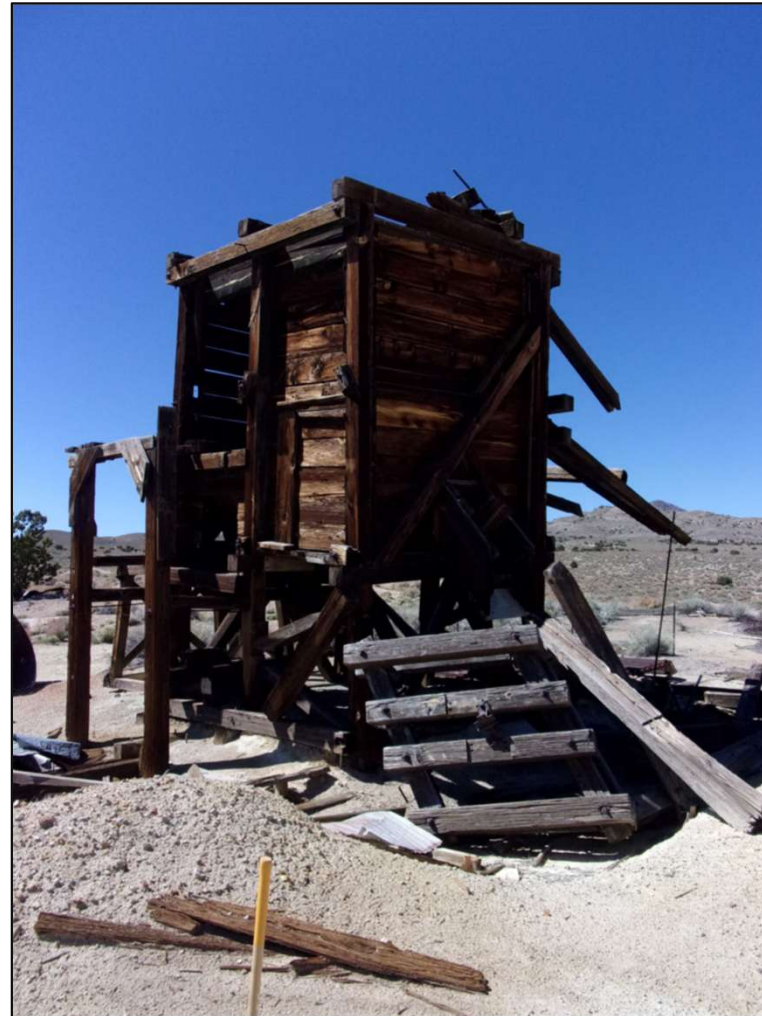
- Permits covering 3 sections / 1628 acres.
- High grade gold in two settings.
- Covers historic Organ Grinder Mine and Big Ben Mines
- Past drilling (7 holes) & trenching.

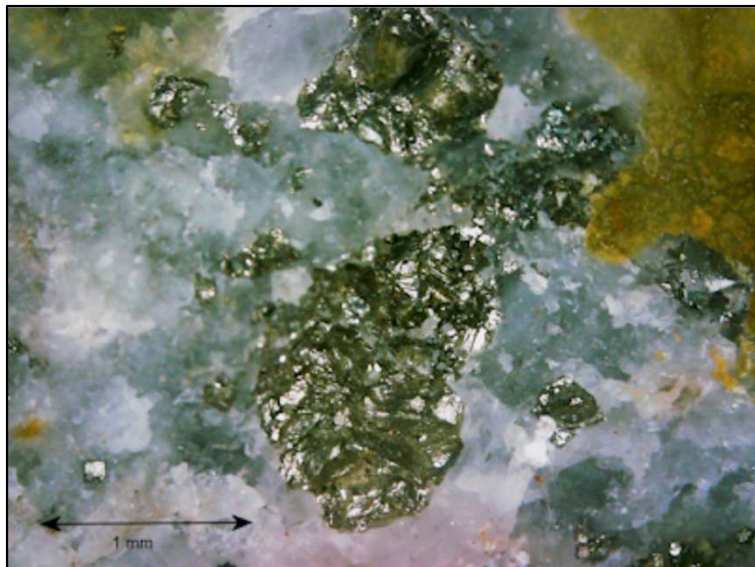
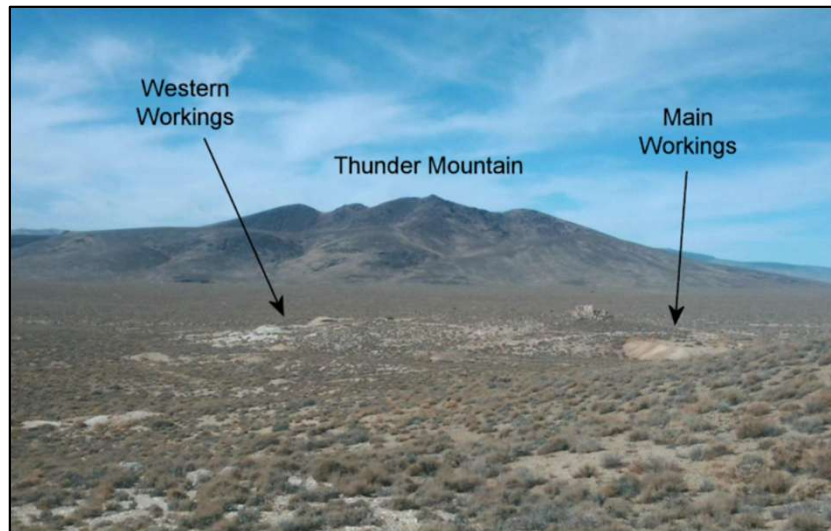




- Southwest Nevada, near Gold Point
- Intrusion-related mesothermal mineralization near roof-pendant contact
- High grade gold & silver in grab samples include **121 g/t Au** and **1,375 g/t Ag**

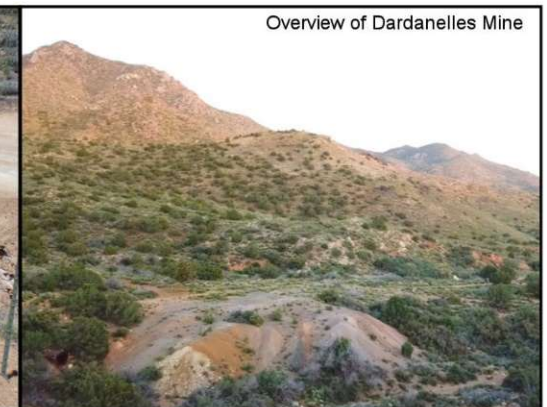
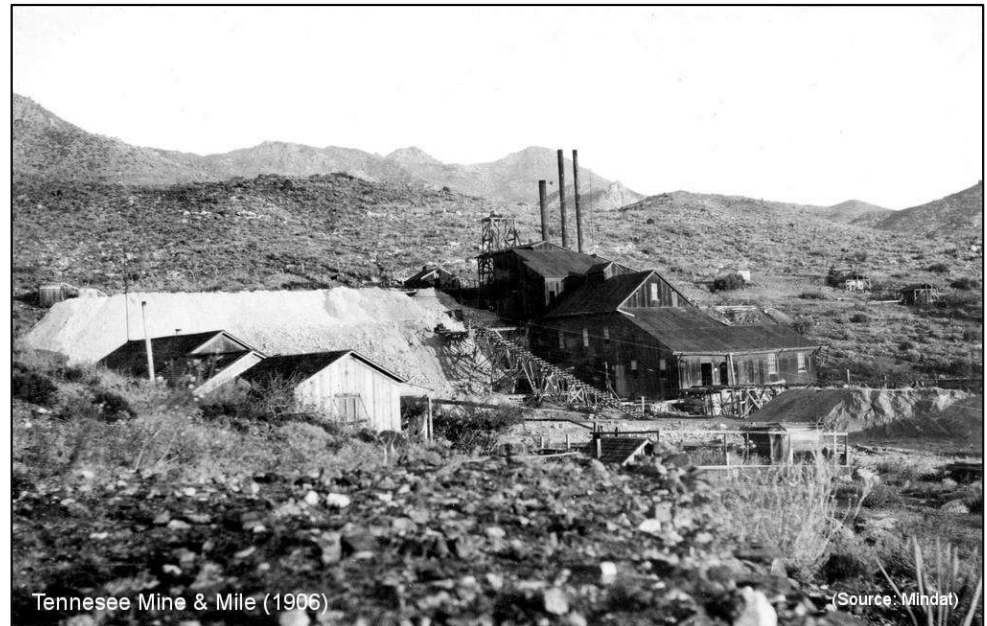
- 28 km ENE of Tonopah, NV
- Low sulphidation gold & silver
- Intermittent past production 1902-1934
- Covers Richardson Mine – most significant producer
- Recent sampling: **598 g/t Ag** and 2.42 g/t Au



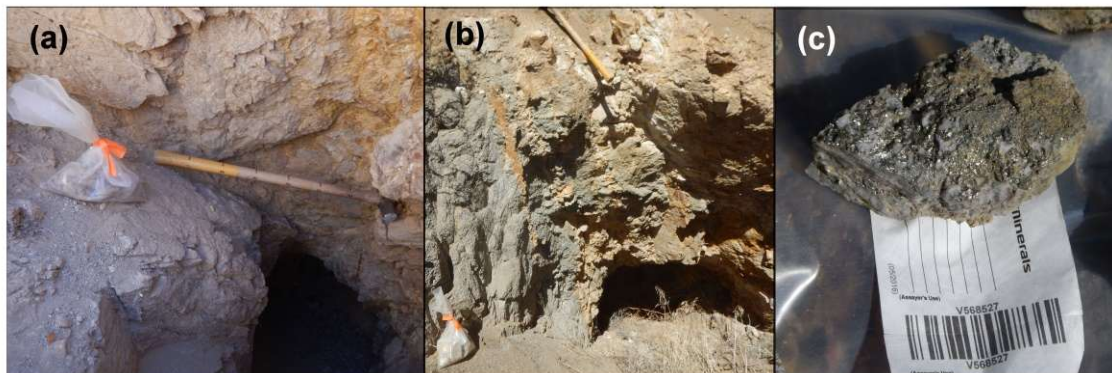


- 25 km NE of Tonopah, NV
- Low sulphidation gold & silver
- Cover the Volcano Mine (1907)
- Historic sampling returned **31.81 g/t Au** and **4,656 g/t Ag**.

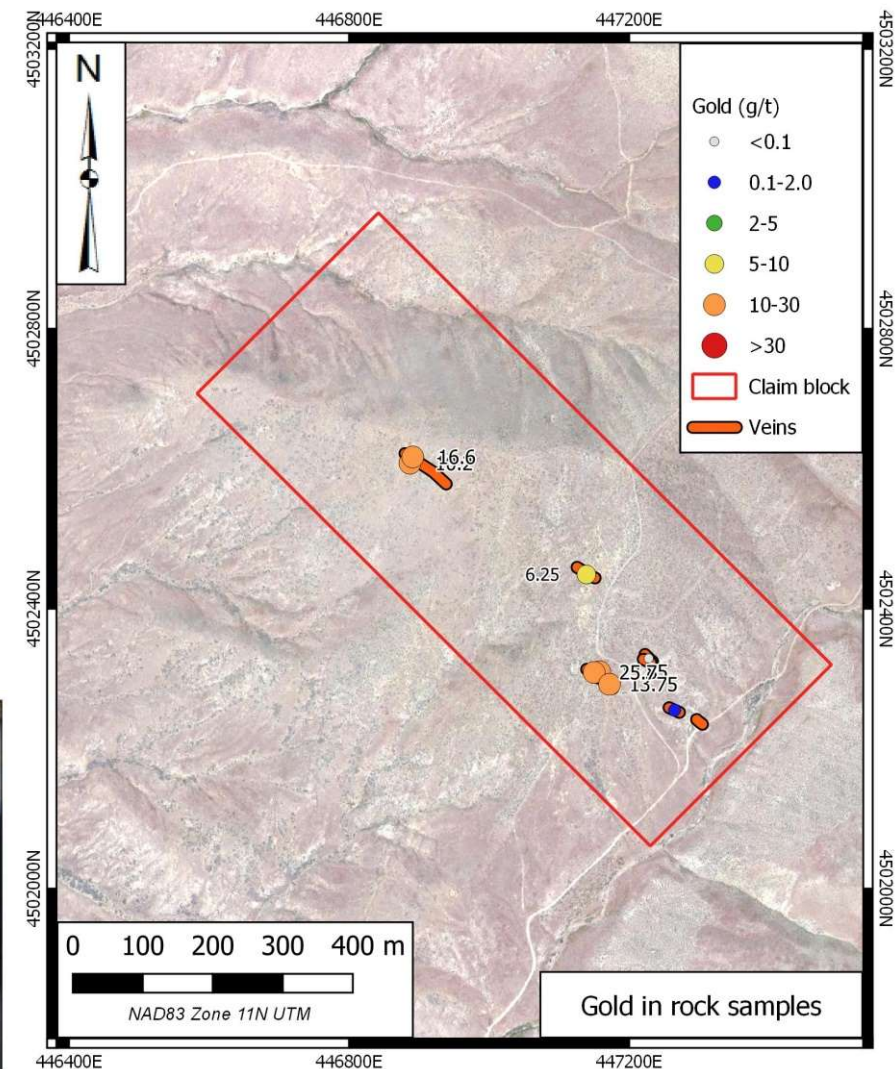
- 28 km northwest of Kingman, AZ
- Mesothermal or intrusion related gold & silver
- Significant production from the adjacent Tennessee Mine
- Significant underground workings on the property
- Recent sampling returned:
18.75 g/t Au, 764 g/t Ag,
11.6% Zn and 2.35% Pb



- Low sulphidation epithermal mineralization.
- Network of veins 540 m long, up to 60 m wide.
- Initial chip sample returned **25.7 g/t gold over 1.83 m**
- Initial grabs to **16.6 g/t gold**

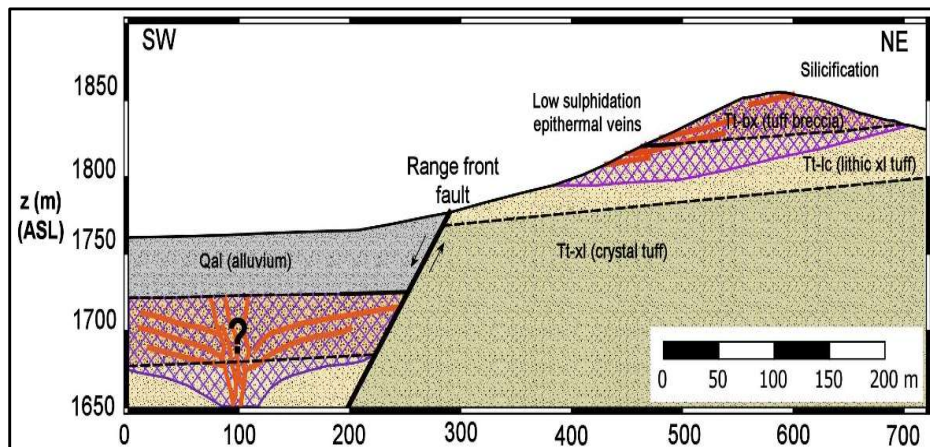


Loner mineralization (a) 0.3m @ 13.85 g/t Au from weathered vein (b) vein swarm in granite (c) sulphide mineralization at NW end of the property (10.2 g/t Au).





- Intrusive hosted Au-Cu target
- Vein / fault controlled
- Surface samples to **35.1 g/t Au & 19.1% Cu.**
- Historical shallow workings; no evidence of drilling.
- Overlooked showing: No MRDS.
- Road accessible – Central NV.



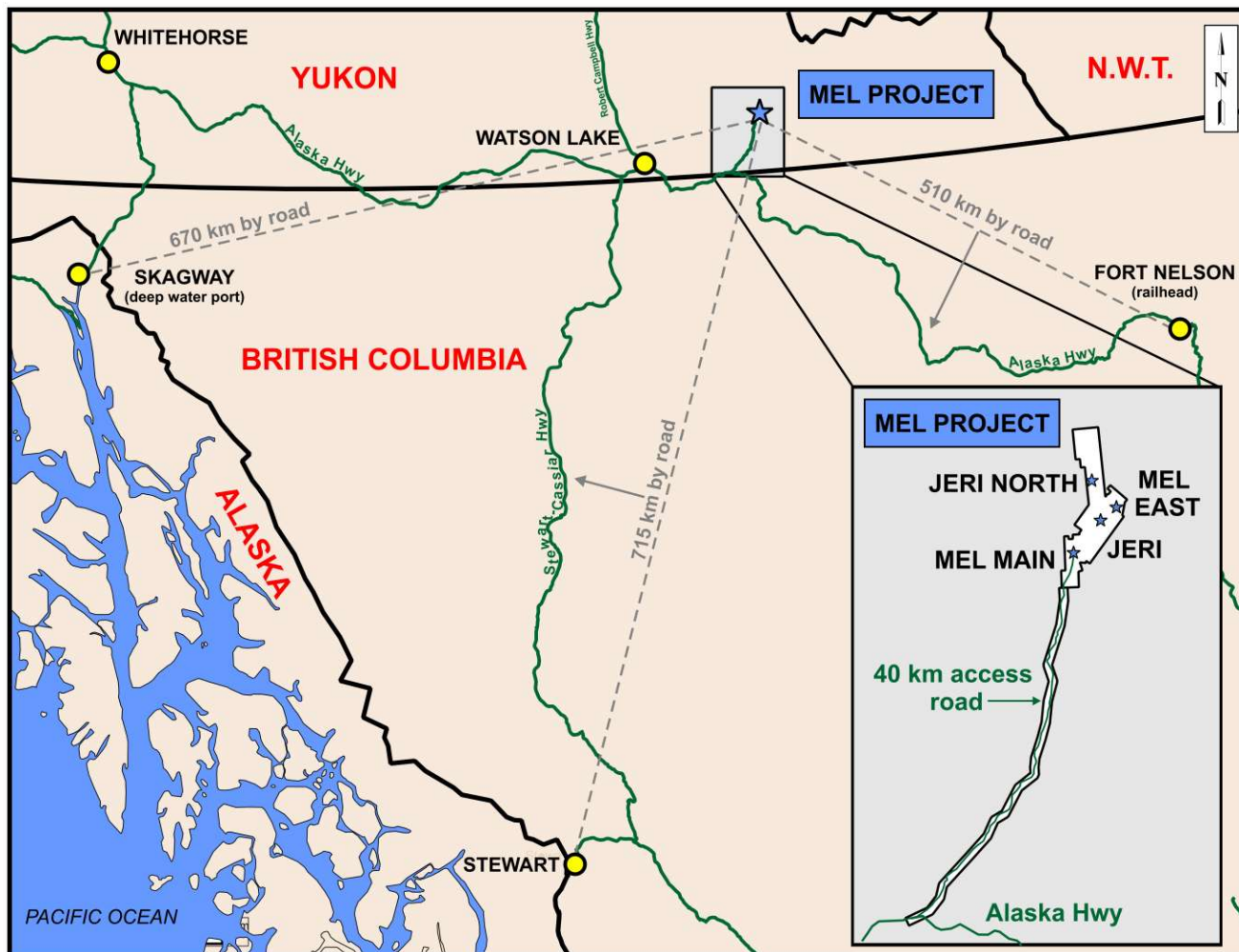
- Low sulphidation epithermal system exposed for 500 m on range front ridge.
- Surface mineralization up to **20.1 g/t Au** and **1,770 g/t Ag**.
- Extensive project database
- Drill target in adjacent valley
- Road accessible, 1.4 km from Highway 50

- 67 km west of Prescott, AZ
- Orogenic / mesothermal gold
- Minor production: 1906-1931
- 107 m inclined shaft
- Developed along strike for 100 m to a depth of 50 m
- 10 stamp mill operated on the property until 1931
- Recent sampling: to **22.8 g/t Au** with 4/27 > 5 g/t Au

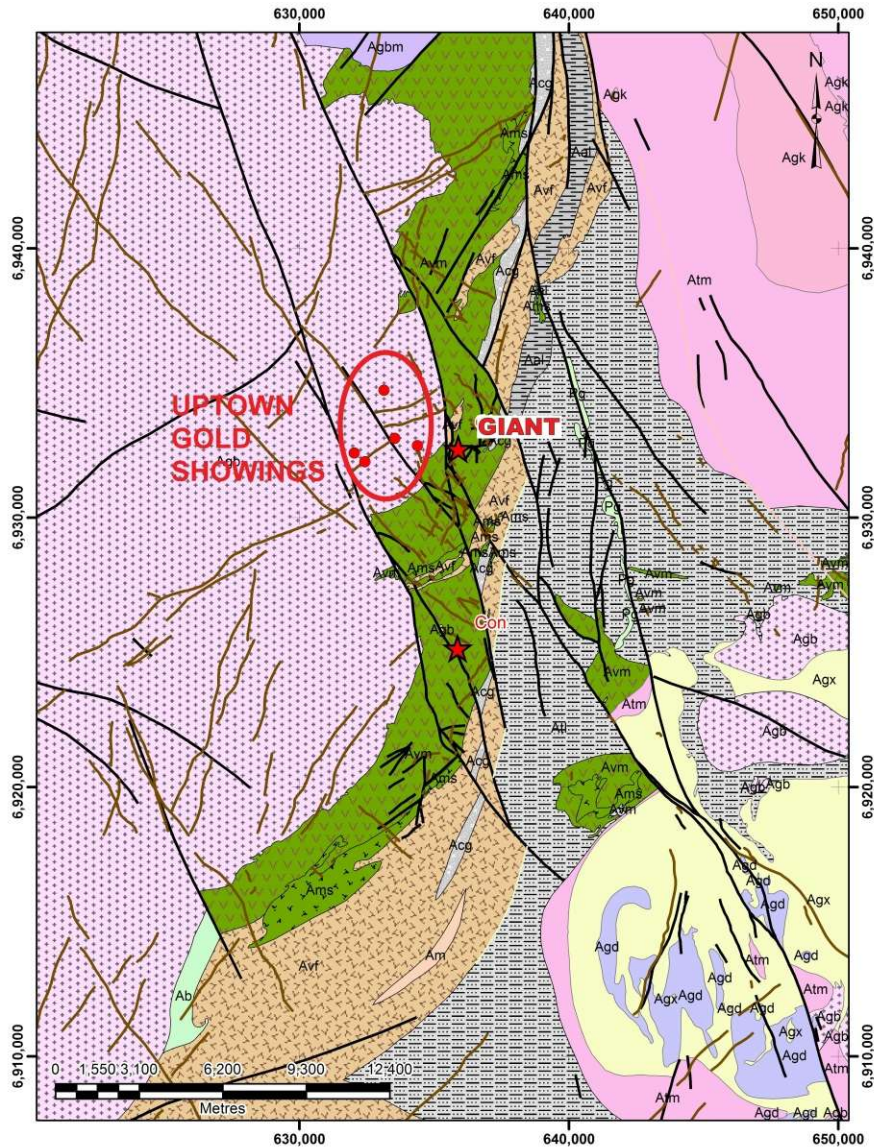




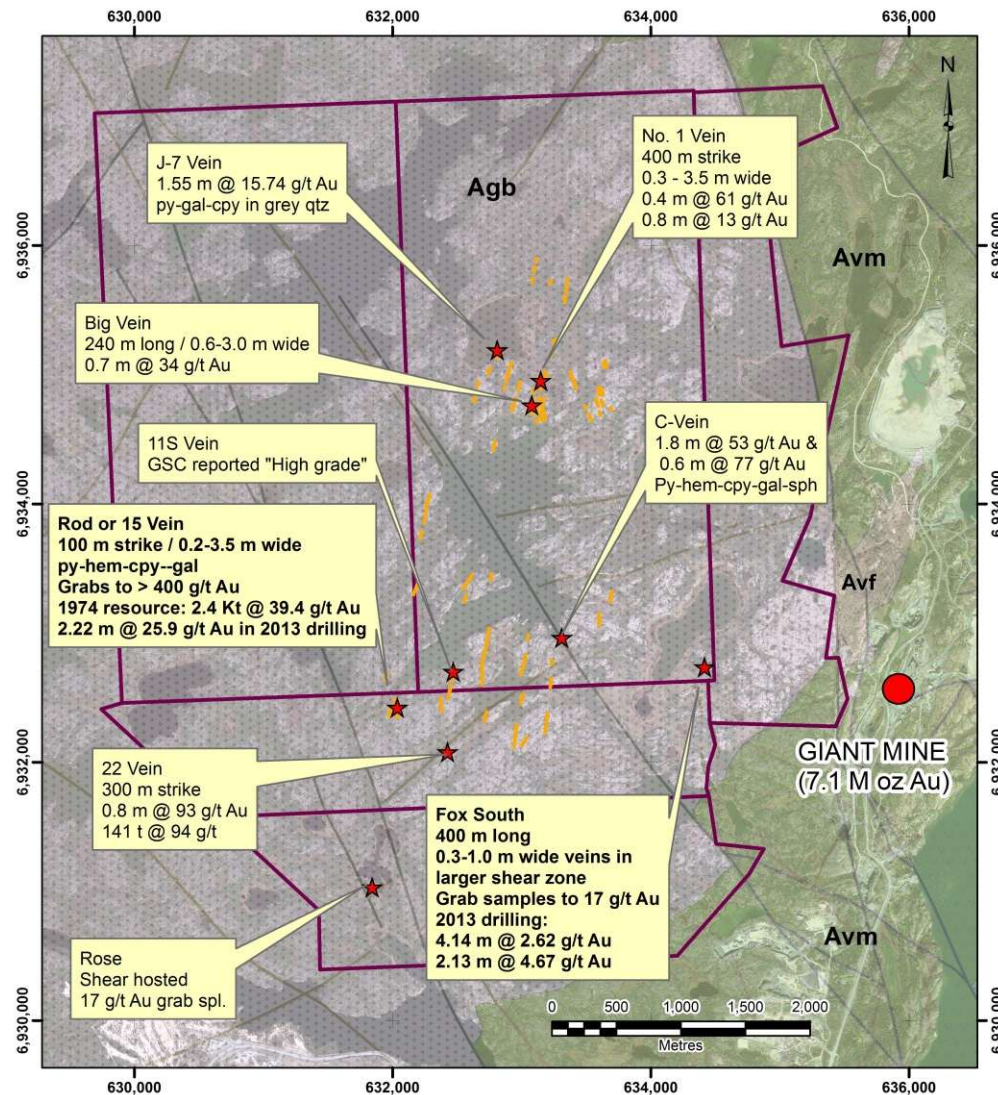
Zinc-Lead-Barite Deposit Optioned to Benz Mining Corp. (TSX-V:BZ)



- Located 40 km north of the Alaska Highway in southeast Yukon, 510 km by road from Fort Nelson (railhead) and 670 km from Skagway (tidewater port).
- Four zinc-lead-barite stratabound zones open for expansion.
- The Mel Main Zone hosts an inferred resource of 5.38 million tonnes grading 6.45% zinc, 1.85% lead and 44.79% barite*.



- Near downtown Yellowknife NT
- High grade Archean granitoid -hosted lode-gold mineralization
- 8 showings with mineralization grading from 10's to 100's g/t Au.
- Small scale gold production from two showings
- Indications of a large-scale mineralizing system.
- Adjacent to an 7.1 M oz gold deposit (16.1 Mt @ 15.5 g/t Au – past production)



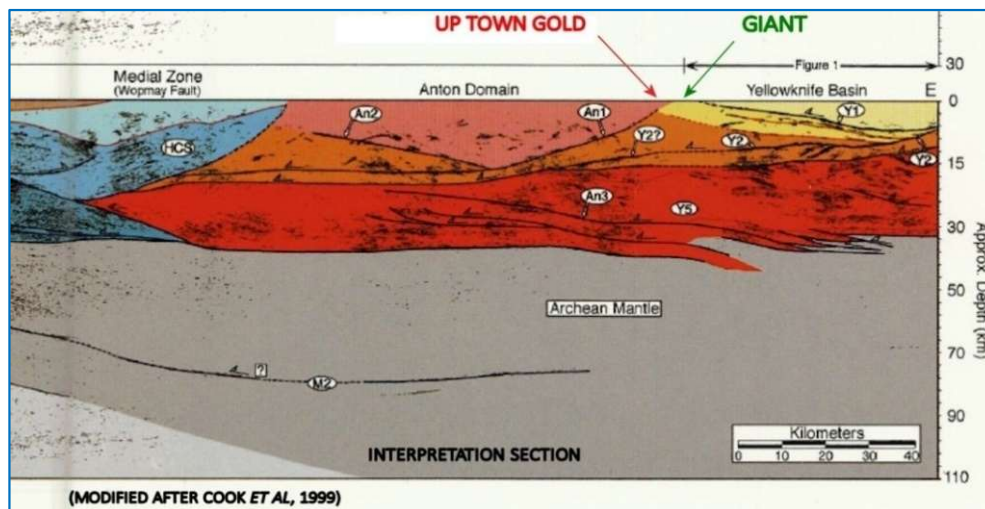
- Wide spread vein hosted mineralization.
- 8 known showings
- Shallow (<60 m) drilling at 6 showings
- Small high grading operations at two showings (Rod & 22 Vein)

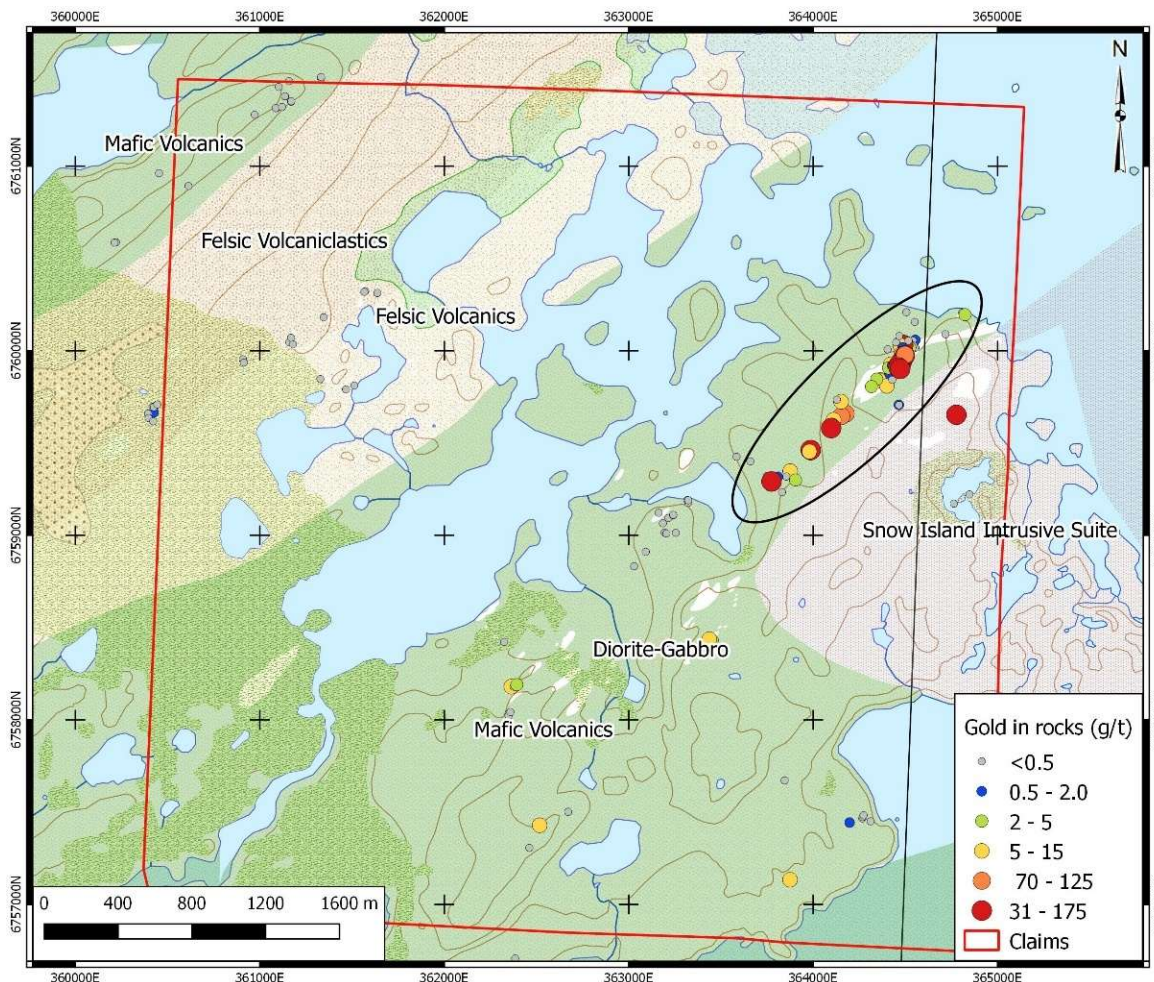


(Sampling Rod production pit – 2015)



- Intense hematite alteration near vein systems; distal chlorite.
- Sub-parallel structures host Up Town Gold mineralization and the Giant deposit.
- Structures at Giant and Up Town Gold straddle an interpreted deep crustal fault (Lithoprobe)
- Proximity to deep crustal faults / shear zones is a demonstrated control on mineralization in several Archean lode gold districts.





- 1.4 km train of float & bedrock gold to **174 g/t Au**
- 25 of 63 samples > **5 g/t Au**
- Archean lode-gold style mineralization (eg. Timmins, Kalgoorlie, Red Lake)
- Drill targets defined by associated geophysical anomalies
- Recent work with NI43-101 available

REGIONAL SCALE GOLD TARGET ALONG A RHEOLOGICAL BREAK

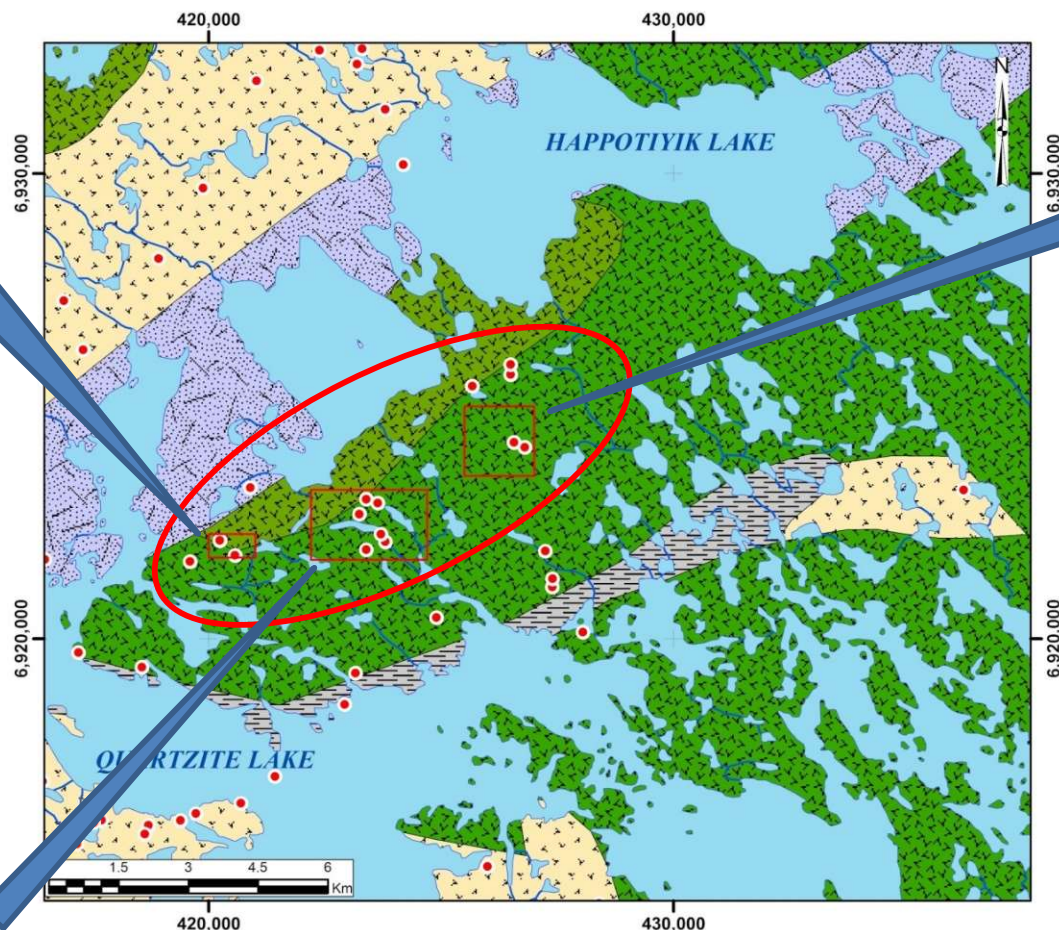
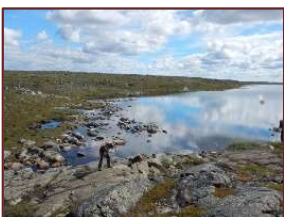
West Zone

- Quartz-carbonate-pyrite-galena veins
- Grab samples to **27 g/t Au**



Eva Lake

- Cpy-py-qtz veins in carbonate altered volcanic float
- Historical grabs: **8.1 to 132 g/t Au.**

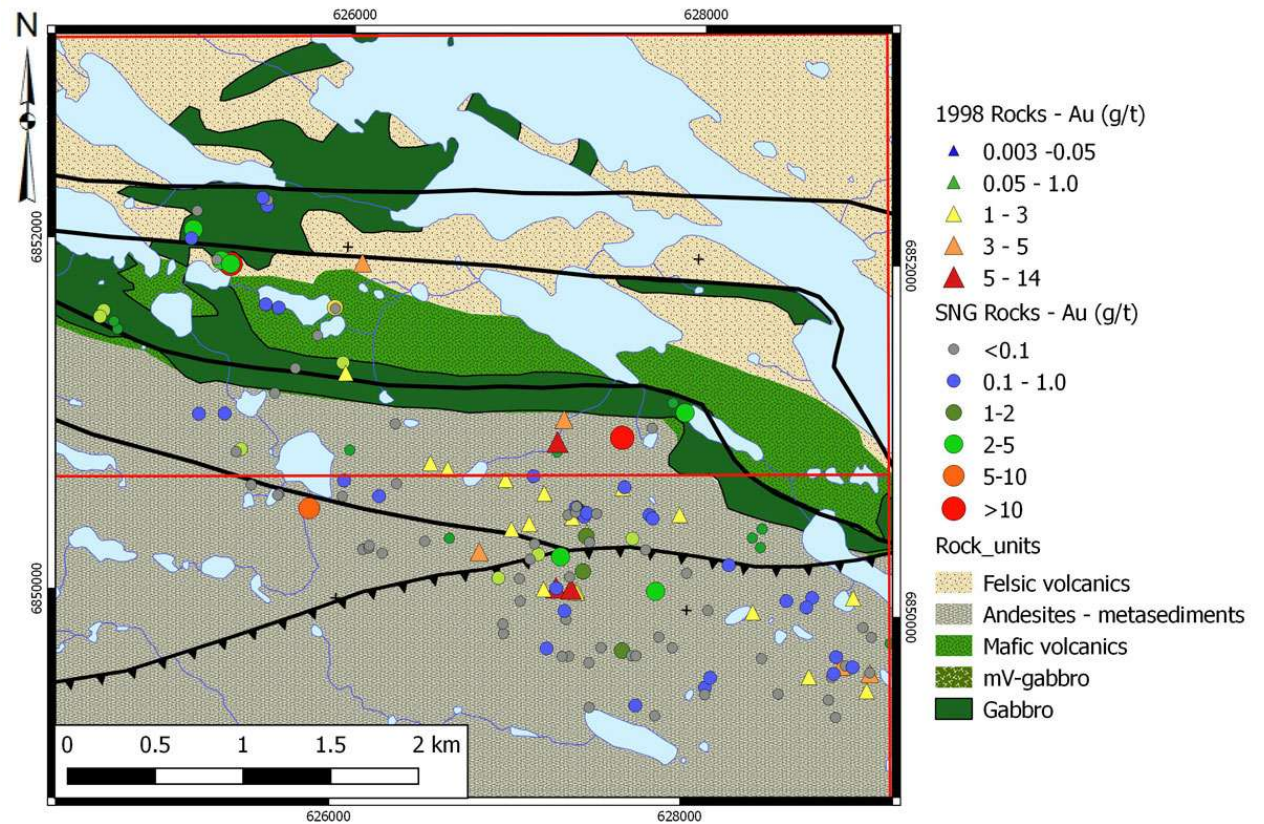


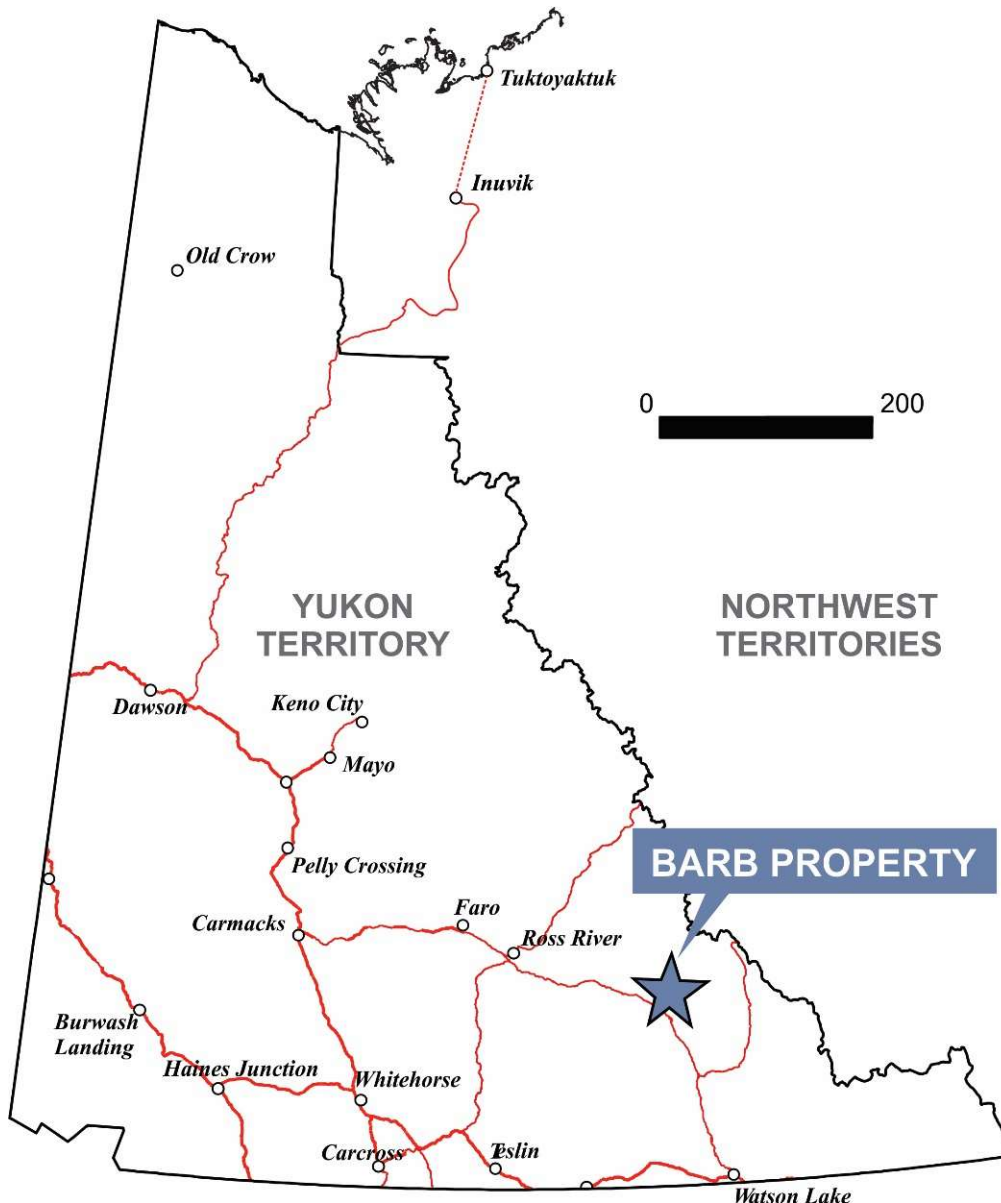
Joan Lake Zone

- Carbonate altered metavolcanics with pyrite-quartz veins
- Historical grabs to **17.8 g/t Au.**



- 150 km WNW of Arviat, NU
- Archean lode-gold
- Drilling by Comaplex (2002):
 - 12 holes
 - 1,766 m
 - **1.25 m @ 17.5 g/t Au**
- Recent (2018) sampling and geophysics.





- VMS style target located 40 km east of the past producing Wolverine silver-zinc-copper-lead-gold mine.
- Historical drilling, geochemical and geophysical work included the preparation of a mineral resource from 1977 by Sovereign Metals Corporation (Ikona, C) of 533,434 tonnes grading 102.86 g/t silver, 6.1% lead and 4.6% zinc*
- Latest exploration took place in 1998 and several high priority geophysical targets have been identified for future drilling

*This inferred resource was calculated using a polygonal model. The reader is cautioned that this is a historical resource estimate and should not be relied upon. Sufficient work has not yet been completed by Silver Range to categorize this as a current resource; however, data collected by previous operators is considered to be reliable and consistent with industry standards at the time.



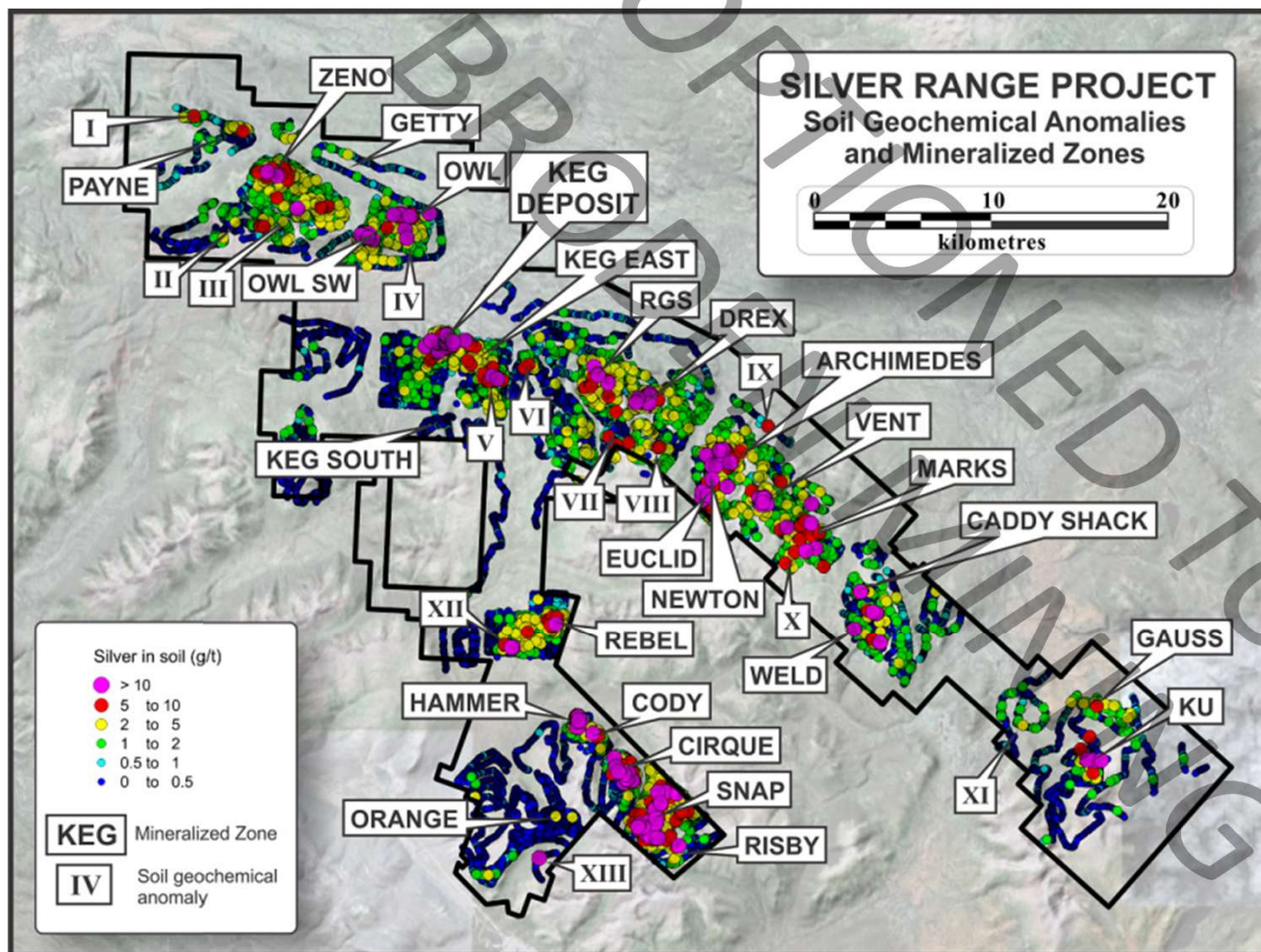
- All of our projects are available for option, JV or outright sale
- Terms tailored to individual partner circumstances – from IPO through junior to major company.
- Projects include:
 - Comprehensive digital data bases
 - Target reports outlining drill targets / next steps.
 - Permits and posted bonds for some drill ready projects
- Full technical support for execution & permitting available.

Properties currently under option

- Five deposits comprising the Faro District, Yukon
- >20 year mine life – Restarting previous largest global producer of Ag-Pb-Zn
- Joint venture between Ross River Dena FN and Broden (Oxygen Capital).
- Broden has been drilling to prepare updated resources / PFS
- Key signature from neighboring FN necessary to advance the project.
- Silver Range has a 10% project interest, carried through until conveyance permits received & a royalty on 1 deposit



FDistrict Scale Silver Lead Zinc Project – Faro, Yukon Optioned to a Private Company

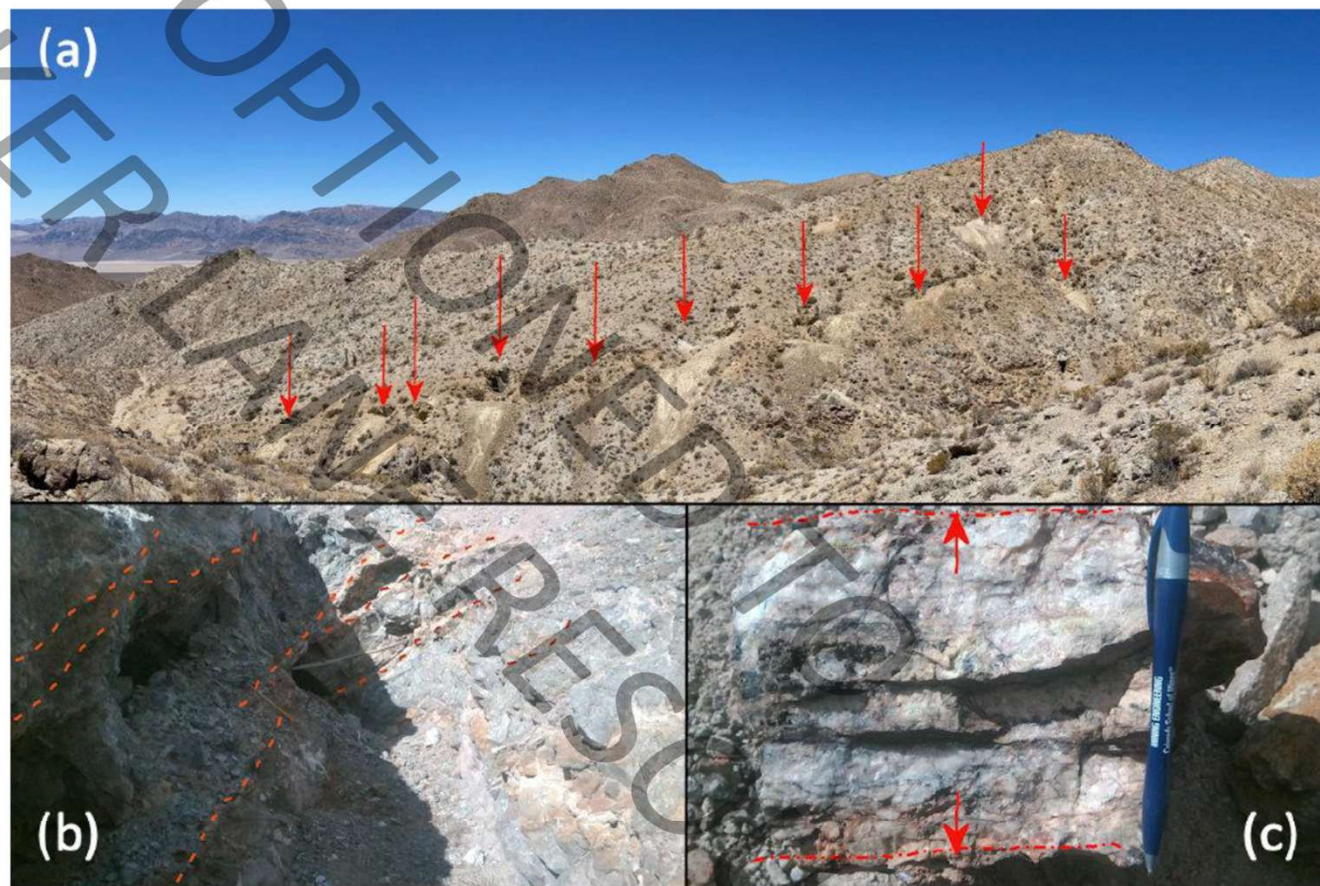


- The Silver Range project is a developing silver district centered on the 39.76 million tonne Keg deposit* see page 2
- **38.7 million ounces silver**
- **675 million pounds zinc**
- **228 million pounds lead**
- **131 million pounds copper***
- Open to expansion to WNW, with edge drill hole Keg-66 returning 30 m @ **51.86 g/t Ag** (+significant Pb-Zn-Cu-Sn-In)
- 25 additional Ag-bearing zones and a further 13 discrete soil geochemical anomalies

- Eastern extension of Gold Point mining district, southwestern NV
- Historic production from several nearby mines (+ 28,000 oz Au)
- Similar setting, rock formation and style of mineralization as at Mineral Ridge (Scorpio Gold)



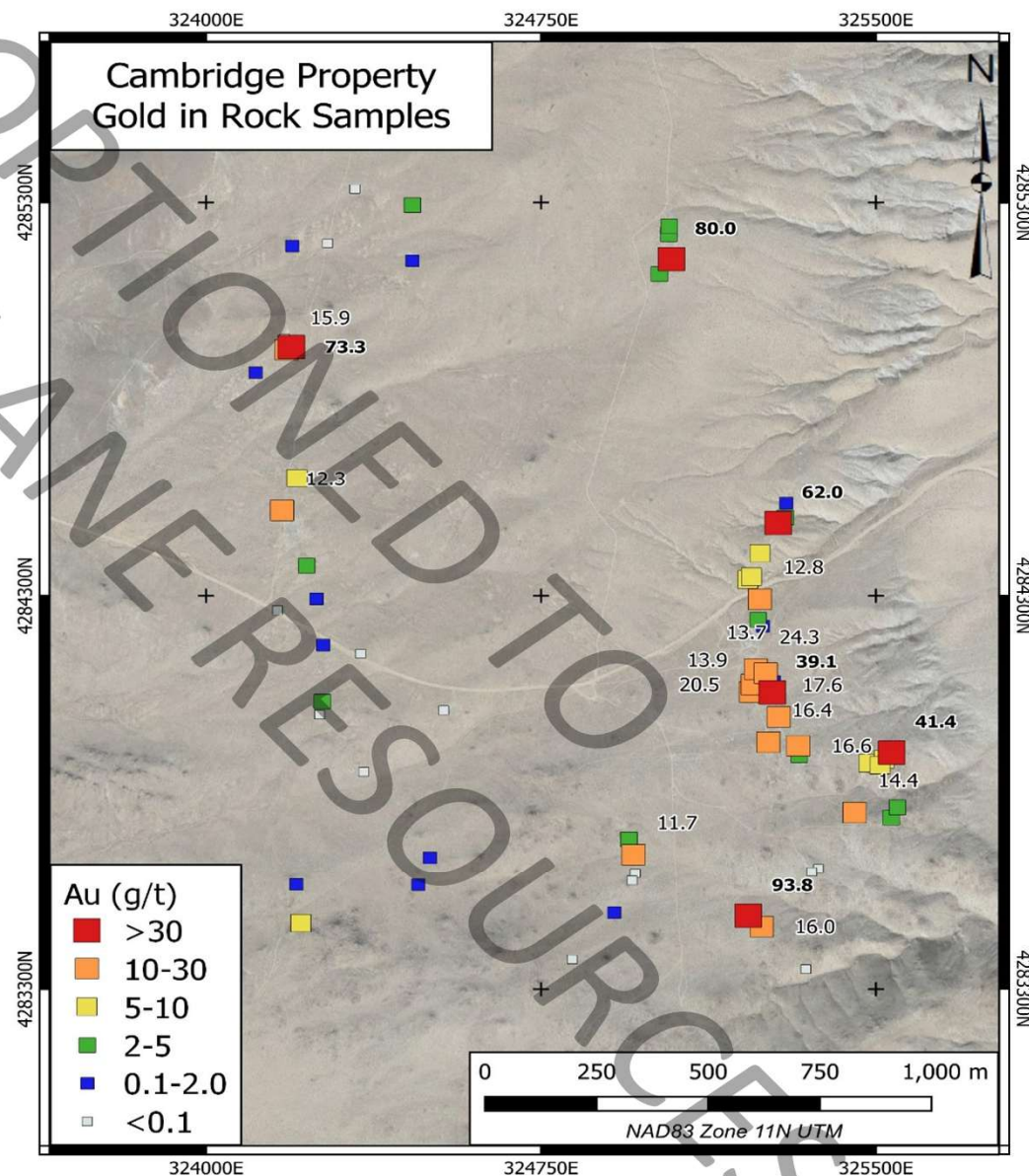
- 57 km southwest of Goldfield, NV
- Mesothermal or deep epithermal silver
- Intermittent high grading since 1917
- Underground workings at Old Cabin and Gulch Showings
- Recent sampling to **3,270 g/t Ag** with 7 / 16 > 100 g/t Ag



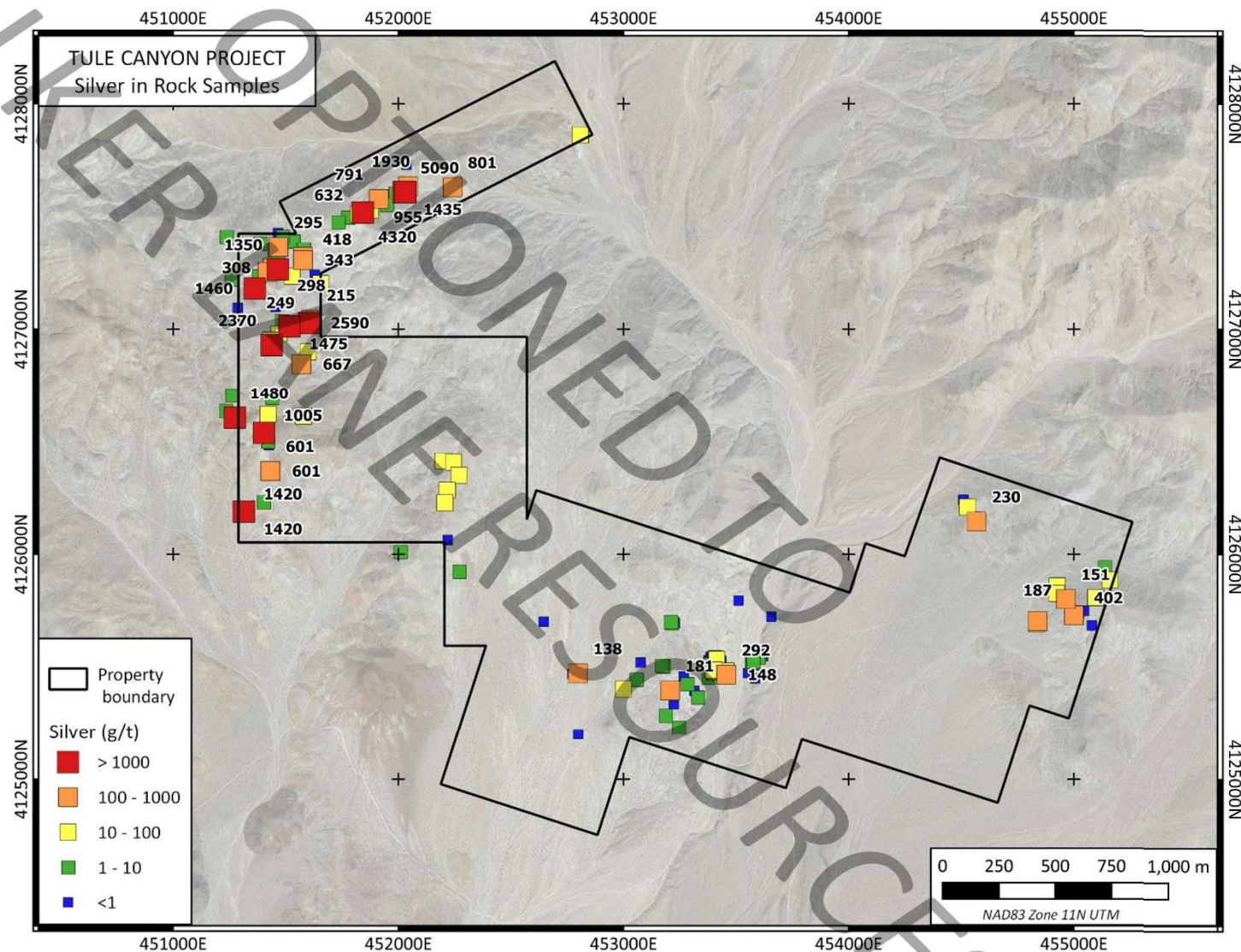
(a) Gulch showing with historic workings indicated by arrows. (b) Stacked, planar veins in a working at the Old Cabin showing, indicated by orange lines. (c) Extensional vein detail – Old Cabin Showing. Mineralized quartz grades > 100 g/t Ag.



- Mesothermal gold near Yerington, NV
- Intermittent production 1870's-1942
- Samples to **80 g/t Au** & 3.2 m @ **14.65 g/t Au**
- Extensive vein system; individual veins up to 1.5 km long



- Gold: > 30 g/t
- Silver: > 5,000 g/t
- Four small mining operations (1893 – 1980's)
- Optioned to Green Gold LLC

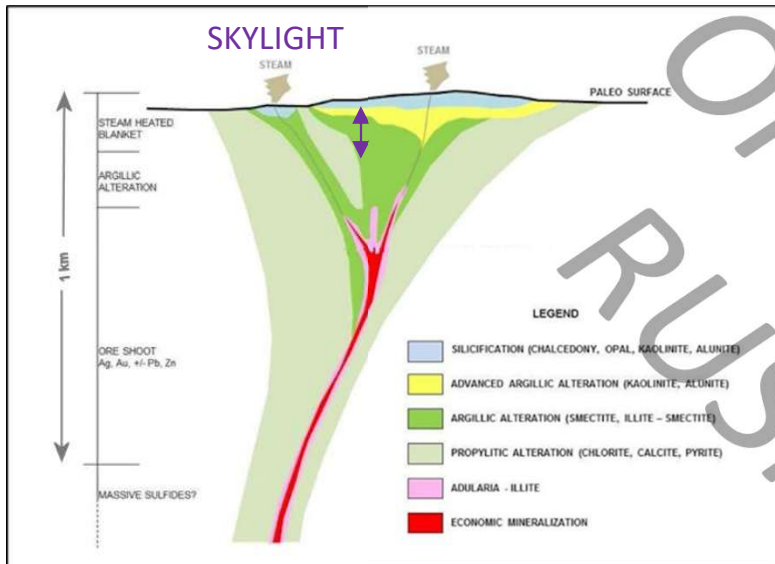


- Covers historic silver / gold district (71 claims)
- Produced 300,000 oz Ag-eq since 1907
- Surface sampling:
 - to 11.85 g/t Au
 - To 1,490 g/t Ag
- Extensive low-sulphidation epithermal system



Bellehelen Mine 50 TPD mill operated 1922-1927





- Royston Hills, Nye County.
- Fully preserved epithermal system including bedded silica caps.
- Historic drilling: 10.67 m @ 0.49 g/t Au; 3.05 m @ 1.766 g/t Au; and 3.05 m @ 0.608 g/t Au.
- Core of epithermal system remains untested



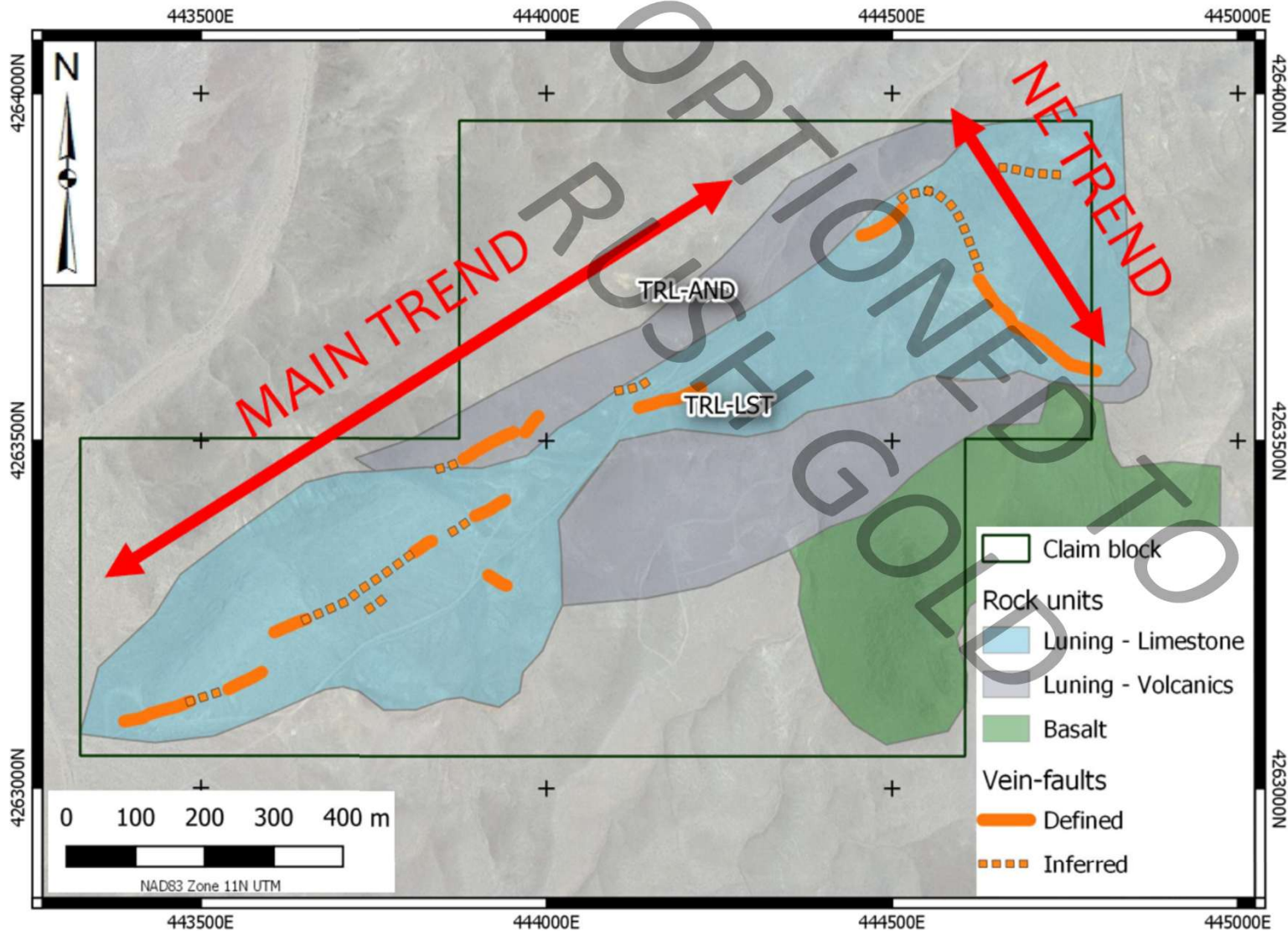
Property viewed from northwest



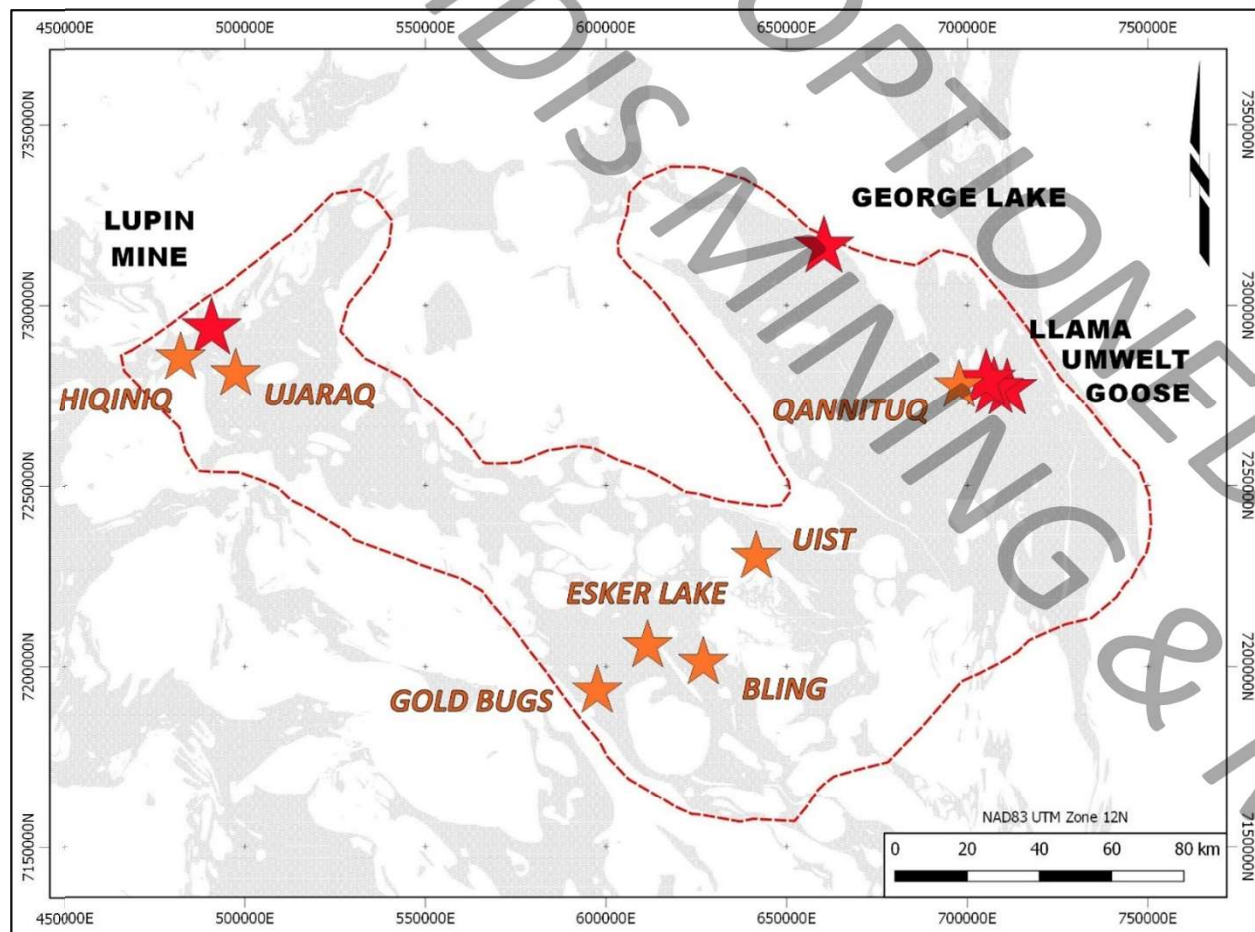
Flat-lying bedded silica



High temperature clay alteration – SW flank of edifice



- Major showings in Republic District, Nye Cty.
- Several small mines (Hyland, Black Butte, Farris)
- Silver to 1,875 g/t



- Seven NWT gold properties between Sabina's Back River Project & Lupin Mine
- Optioned to Viridis Mining (ASX)
- Has earned 51%
- Recent drilling at Esker Lake
- Holds all significant gold showings outside of the mine / development projects



Silver Range Resources Ltd.

510-1100 Melville Street

Vancouver, BC, V6E 4A6

Phone: 604-687-2522

Toll Free: 1-888-688-2522

Web: www.silVERRangeresources.com

Project inquiries:

Mike Power

Above phone lines or

Cell: 702-972-7496

E-mail: mpower@silVERRangeresources.com