

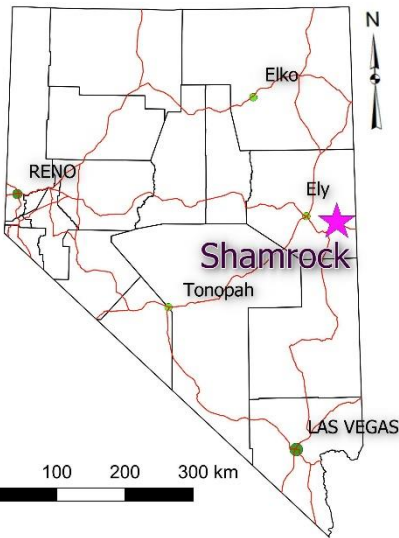


SHAMROCK

www.silverrangeresources.com

TSX-V:SNG

- Gold-rich carbonate replacement deposit (CRD) mineralization
- Grab samples to **233 g/t Au, 1520 g/t Ag, 4.04% Cu**
- Historic past production from two mines

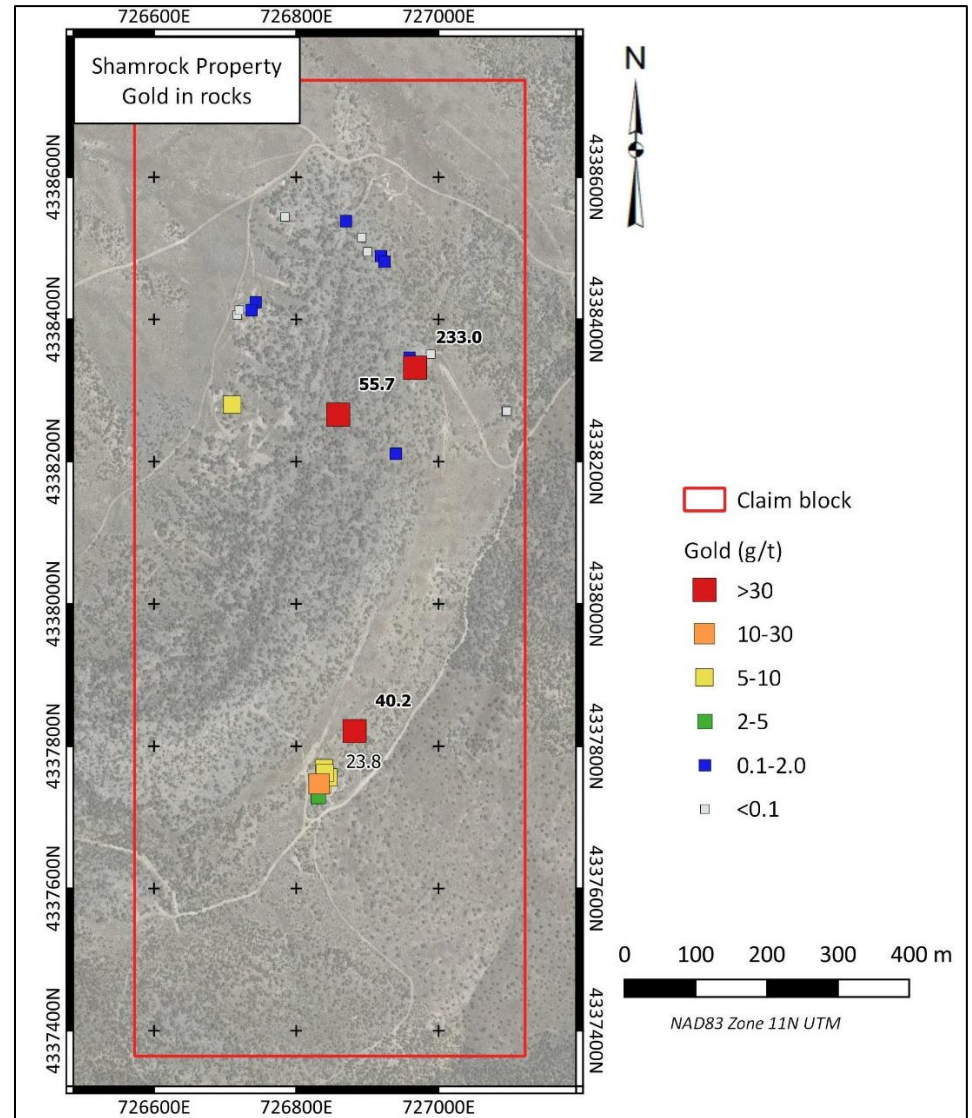
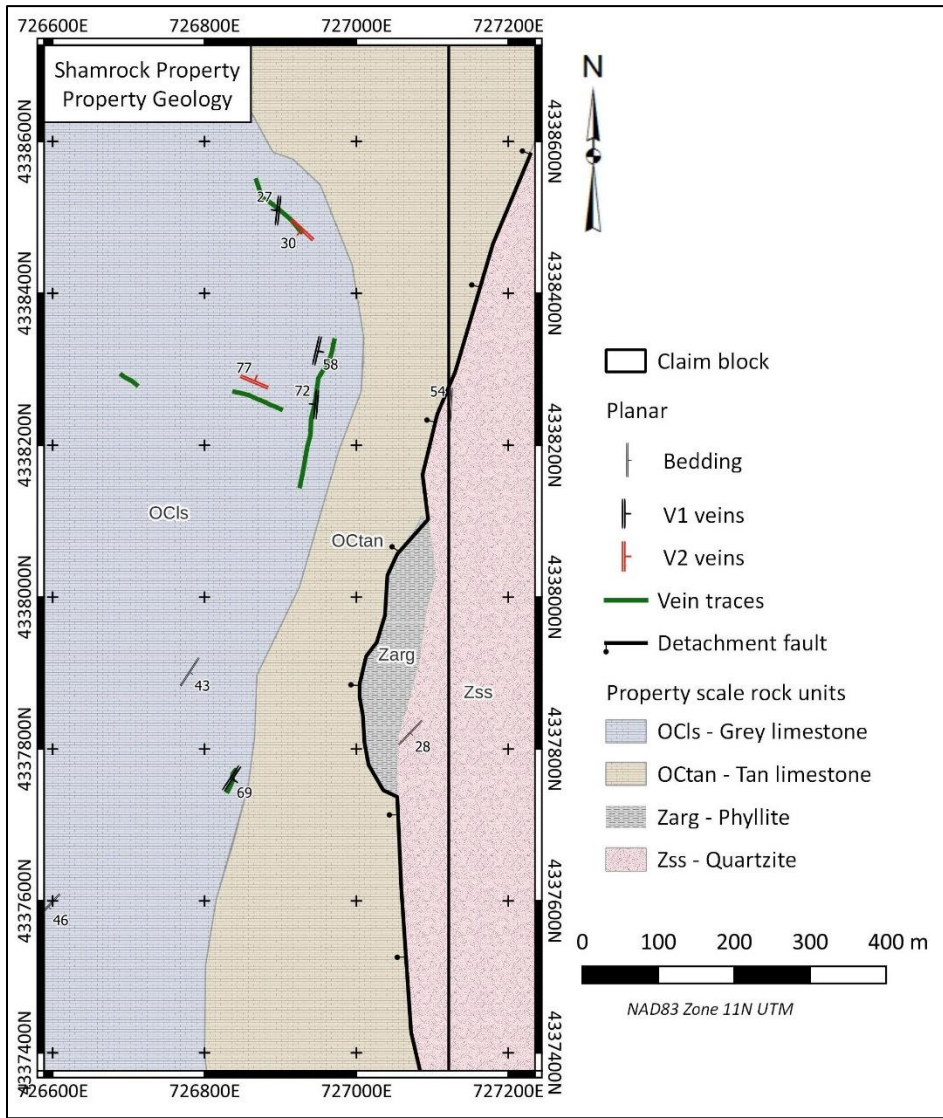


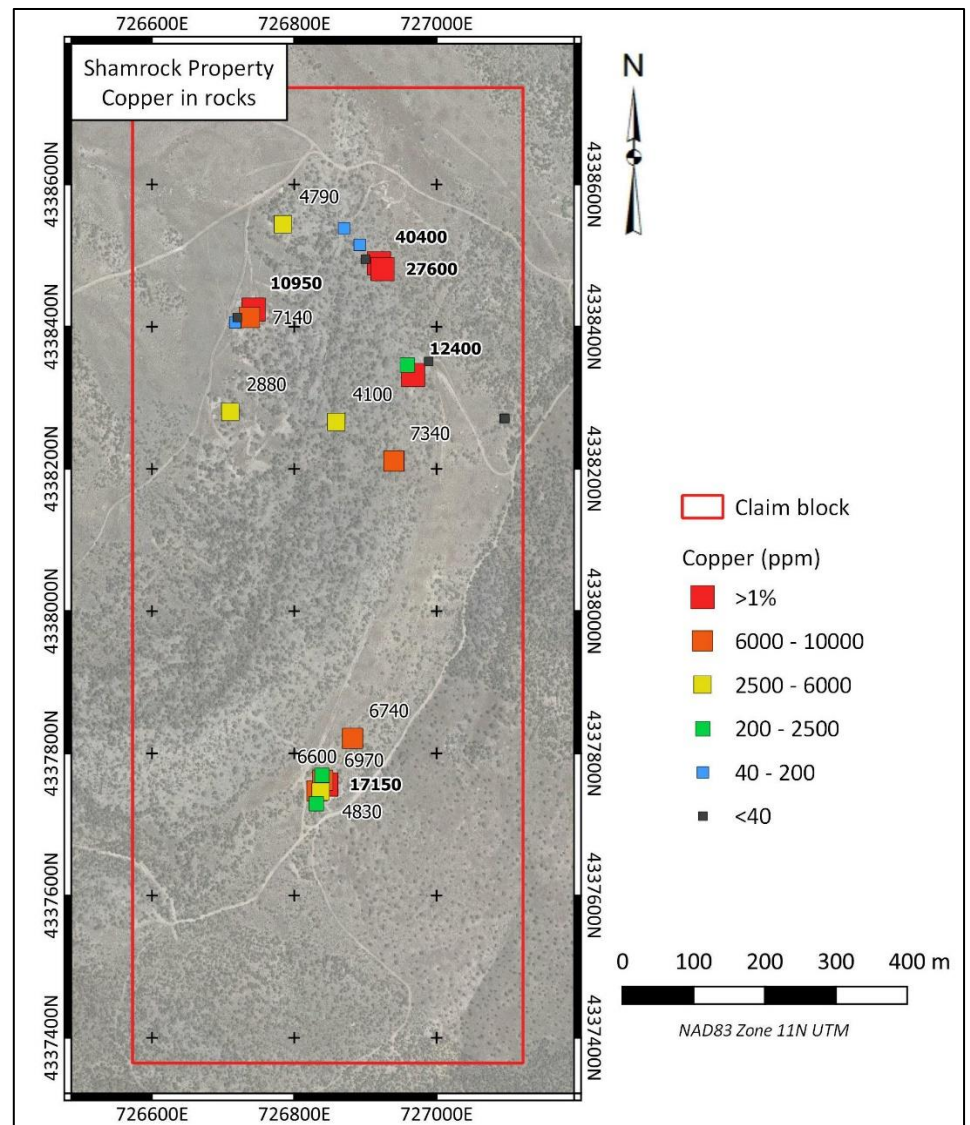
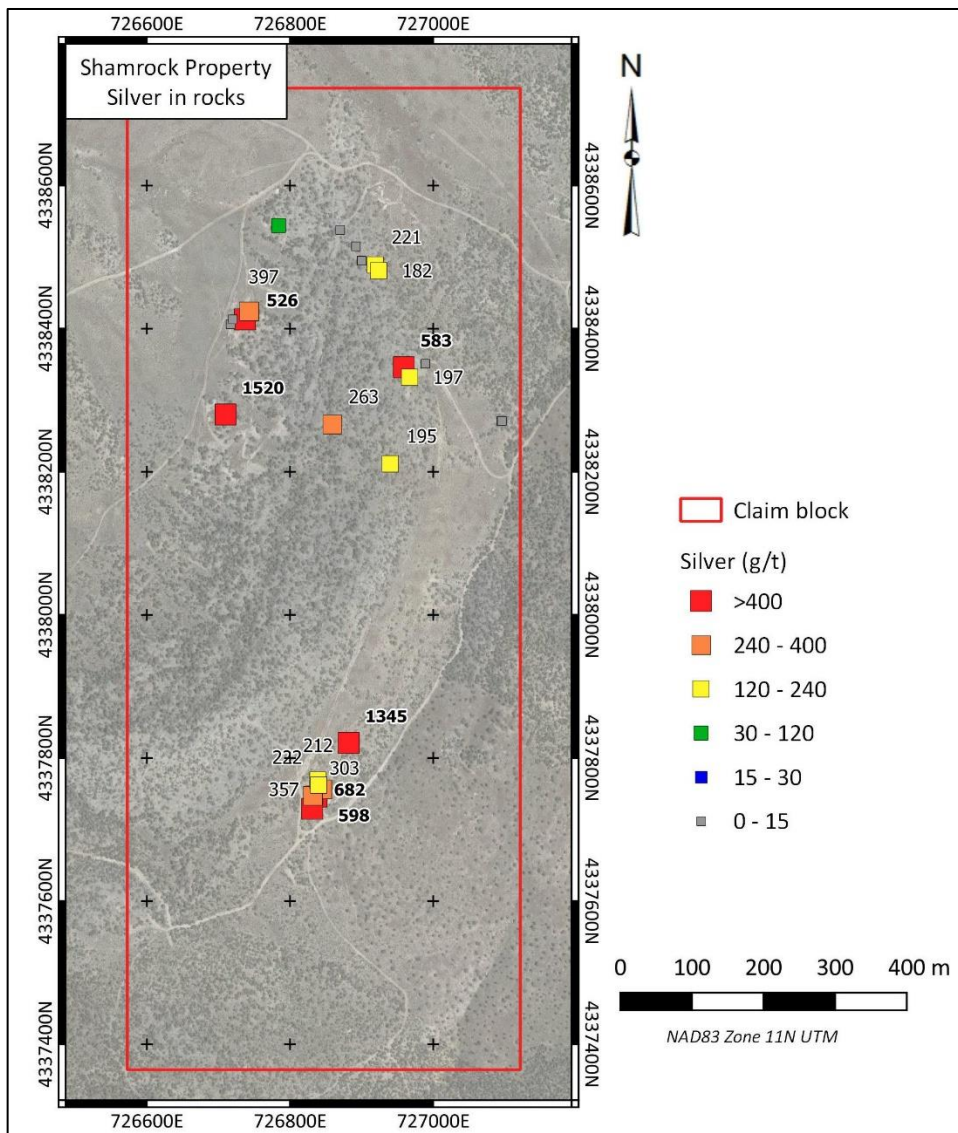
LOCATION & ACCESS

The Shamrock Property is centered at $114^{\circ} 23'W$ $39^{\circ} 10'N$ in Sections 17-20, Township 15N, Range 68E, White Pine County, Nevada. It is 45 km east-southeast of Ely. The property consists of 9 Federal Lode Claims staked on BLM land with no surface impairments. The property is readily accessible off Highway and contains a network of 4x4 roads.

EXPLORATION HISTORY

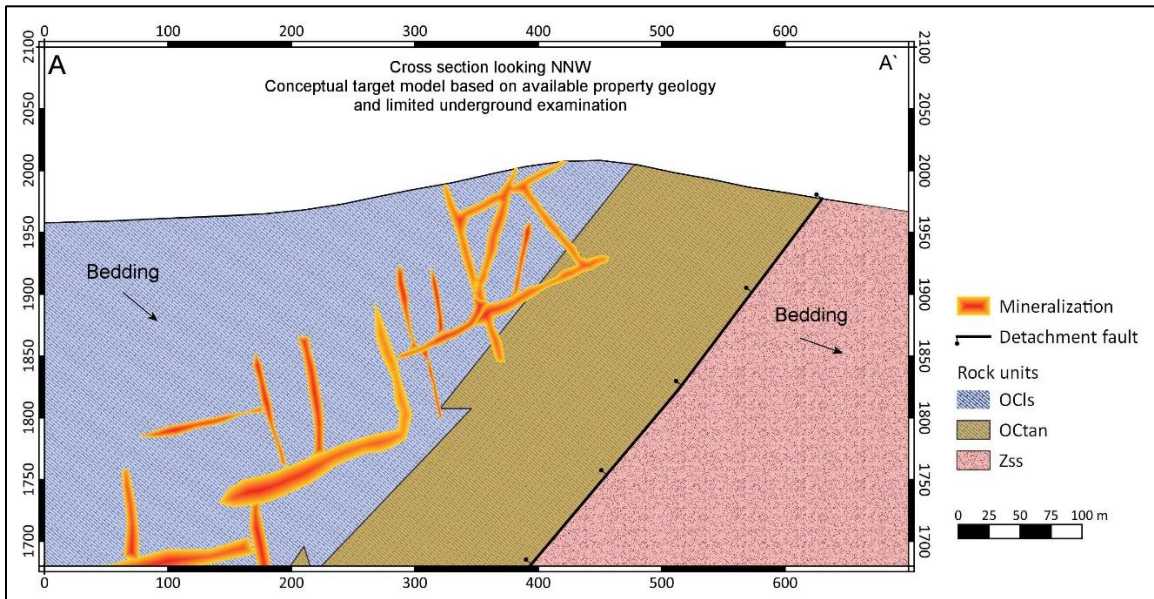
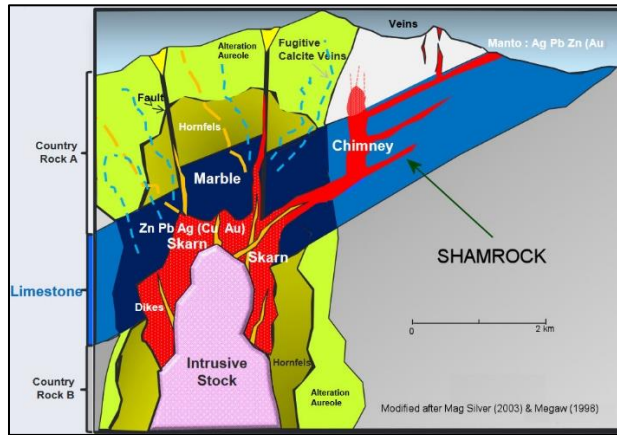
The Shamrock Property is in the Sacramento Mining District. Gold and silver were first discovered there in 1869 and the Shamrock Property covers the two principal mines in the district. The Gilded Age Mine was staked in 1874 and produced intermittently from 1875 until 1948. The Woodman Mine was staked by Moses Woodman in 1897 and produced intermittently from 1898 until 1948. In that year, the combined production from the two mines was the 9th largest in Nevada. Both mines ceased production the next year although there is evidence of more recent high grading at one site since then. During the 1930's, production records show the two mines sent feed to a nearby mill in Osceola grading 1 ounce per ton gold and about the same in silver; copper grades were not reported. There are numerous workings of various vintage on the property including adits, shafts and stopes reaching surface. Silver Range examined the property in 2016 and staked it in May 2023. Silver Range has conducted preliminary sampling, orientation soil surveys and geologic mapping on the property.





PROPERTY GEOLOGY & MINERALIZATION

The Shamrock Property is underlain by Cambrian (Ordovician) Middle Part limestone and Upper Proterozoic to earliest Cambrian quartzite and phyllite. Both units dip moderately to the east-southeast and are separated by a major west-dipping detachment fault bounding the western flank of the Snake Range Metamorphic Core Complex. Discordant veins and breccia cut a blue-grey limestone underlying most of the property. These generally trend NNE or WNW and vary from steeply to gently dipping, forming a lattice work at property scale. Veins are up to 1 m wide in underground workings and consist of quartz with relict sulphides or their alteration products. Mineralized structures occur in an 800 m (N-S) by 300 m (E-W) area. Grab samples from vein and dump material collected at historic workings have assayed up to **233 g/t Au**, **1,520 g/t Ag** and **4.04% Cu**. The mineralization appears to be carbonate replacement deposit (CRD) style with gold enrichment, suggesting deposition ahead of the marble front but proximal to an intrusive source.



PROPOSED EXPLORATION PROGRAM

Silver Range intends to conduct geologic mapping and 3D IP surveys to define drill targets at Shamrock.

THIS PROJECT IS AVAILABLE FOR OPTION, JOINT VENTURE OR SALE.